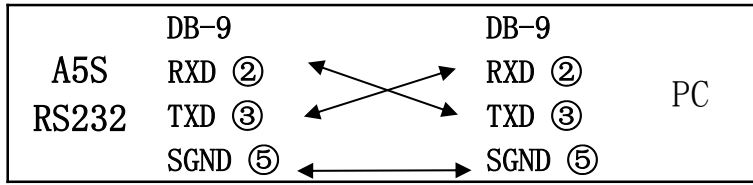


How to RS232 A5S

Step 1: Connect RS232 cable with PC and A5S.

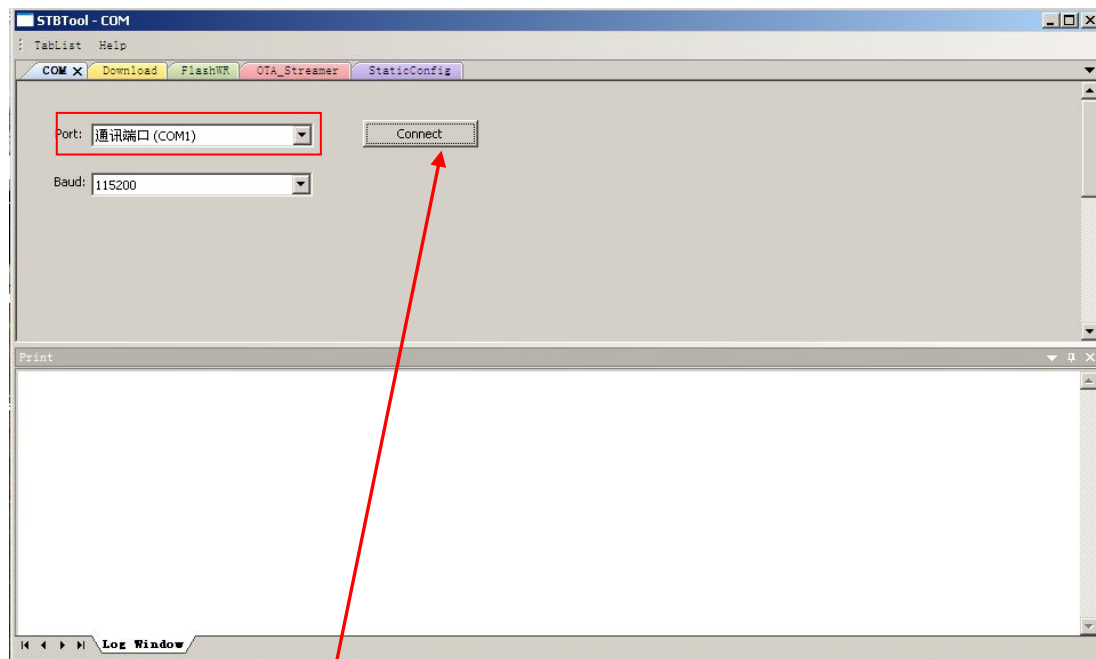


Warning: No power When you do this.

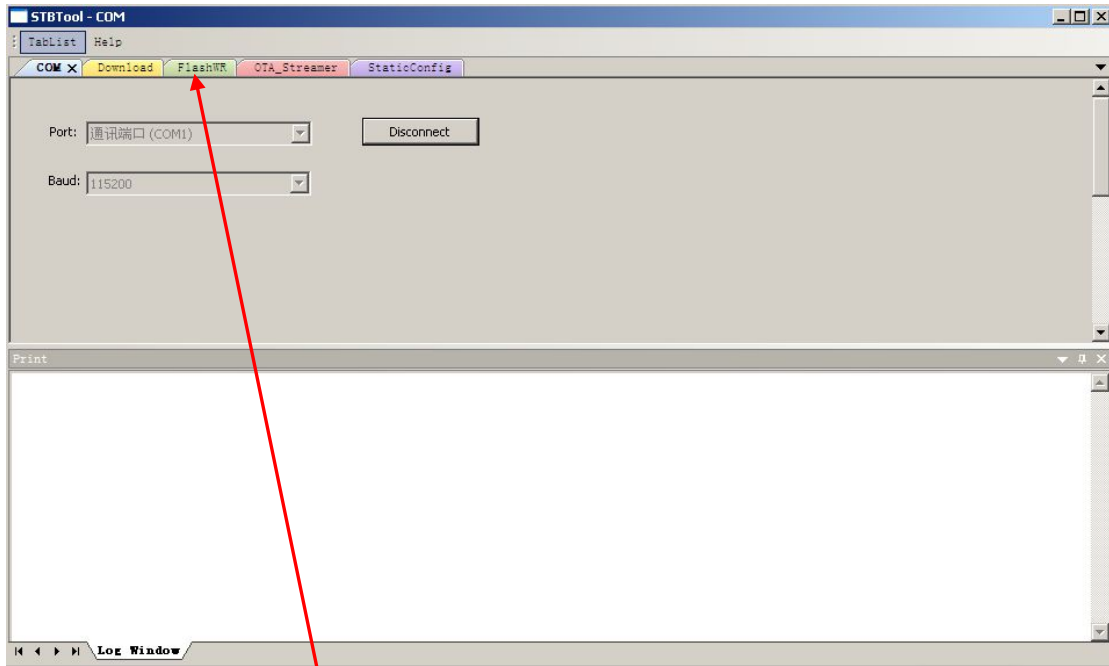
Step2: Open STBTool_1.8

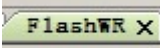


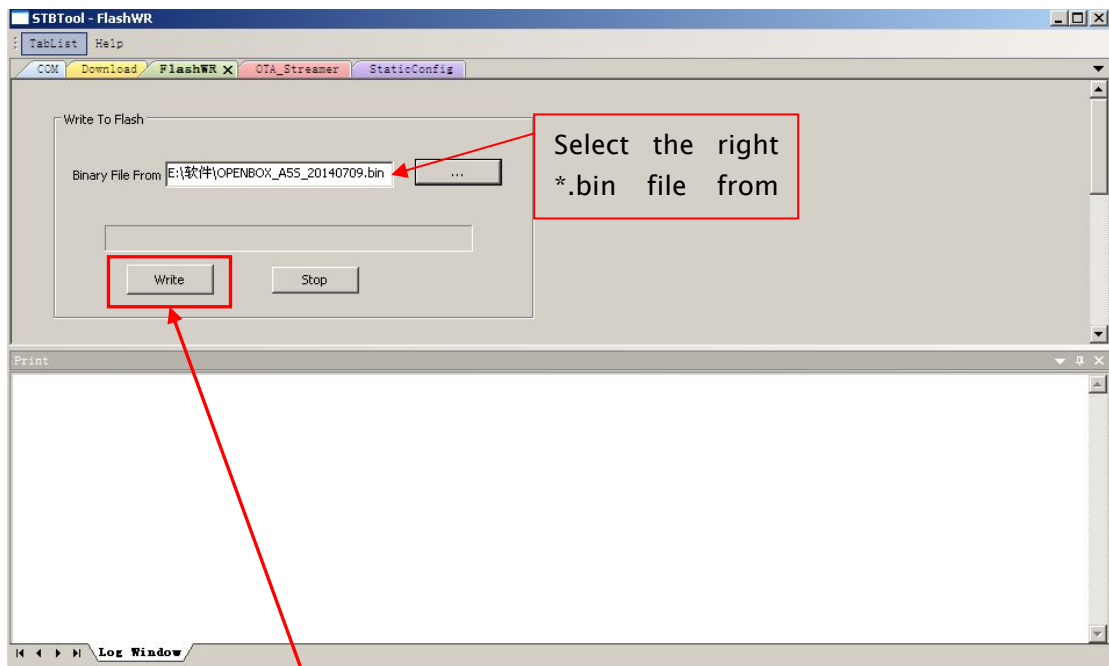
Step3: Select Port



Step 4: Press 



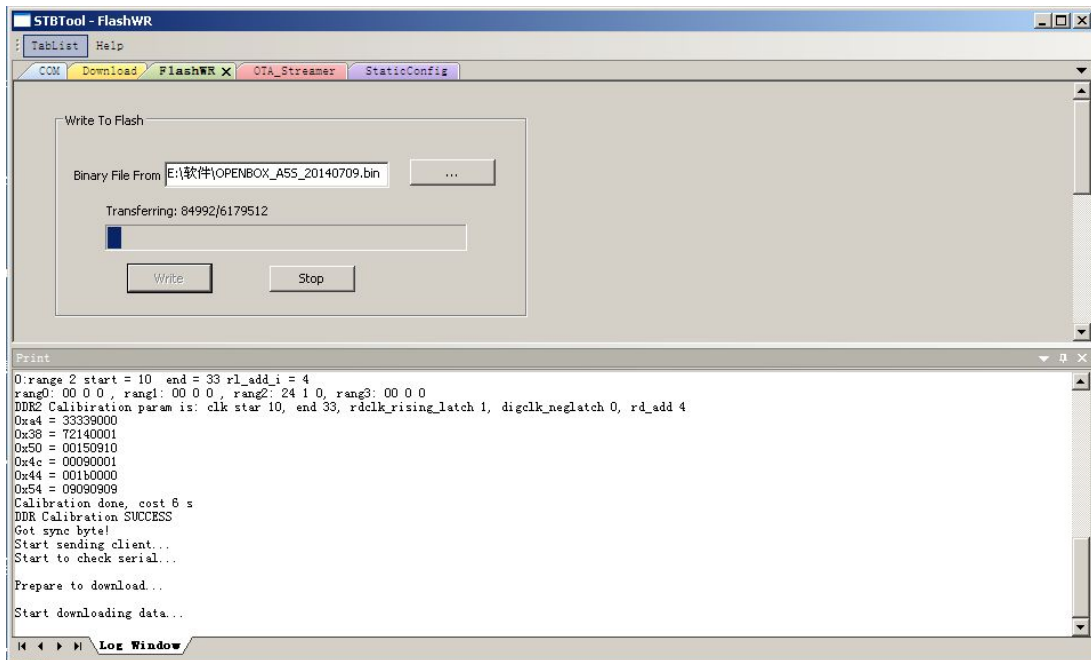
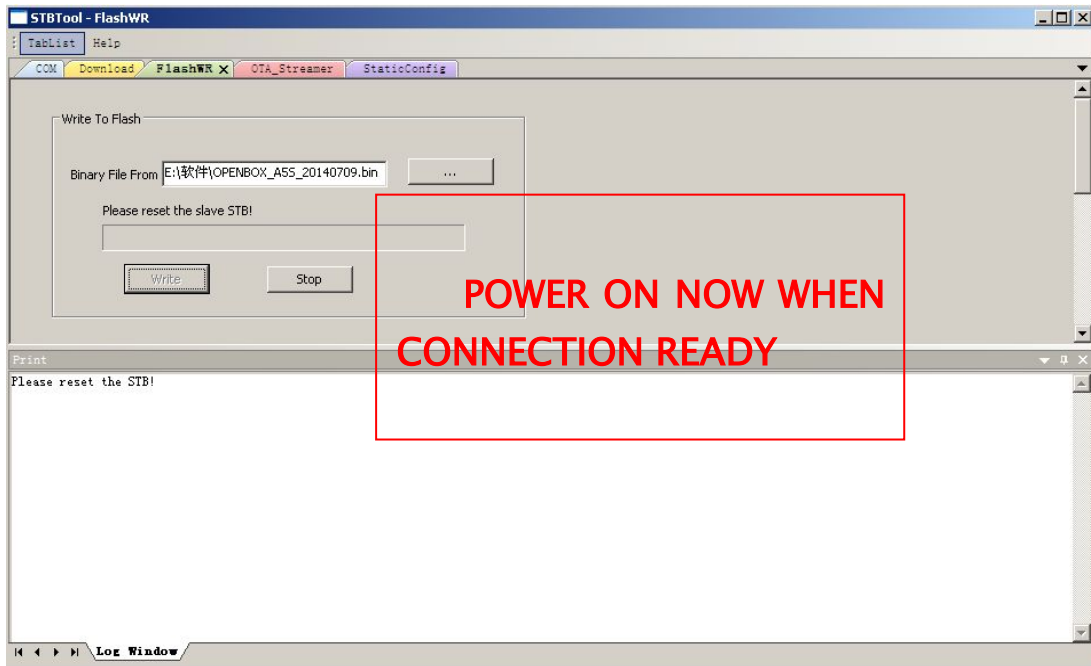
Step 5: Press  to select right software

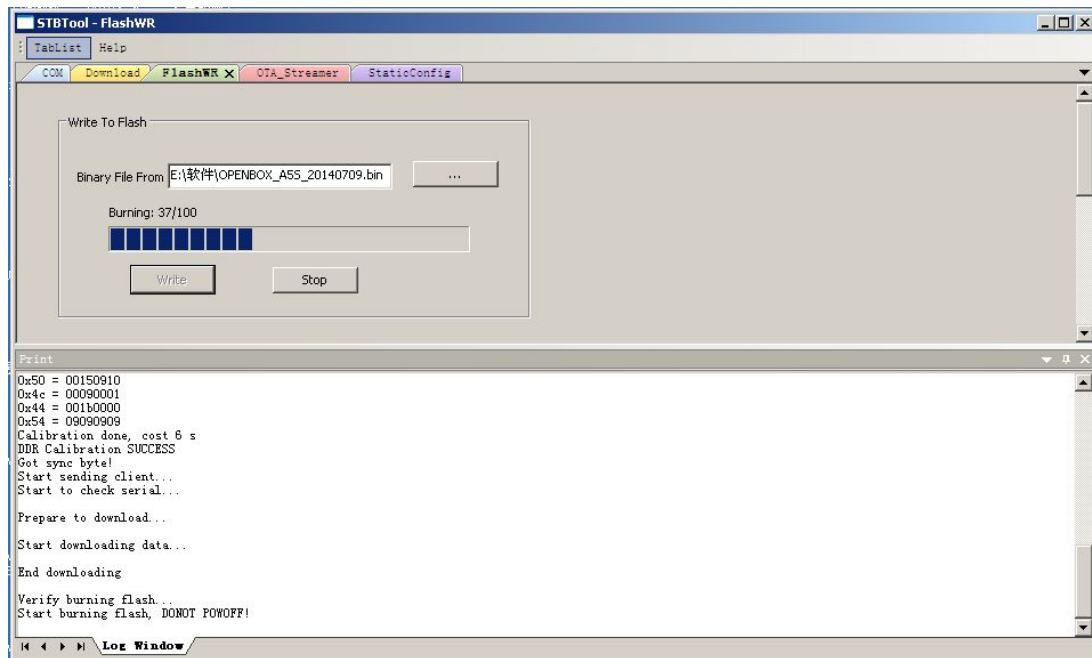


Step 6: Press  , Power On A5S now and waiting until finish.

Notice:

ONLY RED LIGHT WILL SHOW IN BOX WHEN UPGRADING.





A55 will AUTO-RESTART when finish.

Notice:

- 1.Shut Down Anti-Virus when u using RS232 tools.
- 2.Do it again if not success.