

CATALOG

OEM element conversions

Replacement Filter Elements



NUMATICS®

NUMATICS®

Numatics, Inc. is a leading manufacturer of pneumatic products and motion control products. Our broad spectrum of standard, custom developed products and application components, have made a significant impact on pneumatic innovation as well as pneumatic and motion control technology. Our company has an extensive history of generating innovative concepts and technological breakthroughs. Many of today's standard features in pneumatic technology were industry firsts from Numatics. We continue our innovative approach to product development by developing electric motion control solutions and enhancing our embedded Fieldbus and I/O products to continually meet and solve our customer's application requirements.



Today Numatics is proud to be a part of the Industrial Automation Division of Emerson Electric Co. Emerson (NYSE:EMR), based in St. Louis, Missouri (USA), is a global leader in bringing technology and engineering together to provide innovative solutions for customers in industrial, commercial, and consumer markets through its network power, process management, industrial automation, climate technologies, and appliance and tools businesses.

Para Información de contacto de su oficina mas cercana visite www.mro.com.mx

Automation Industries *Automation Smart, Simple, Efficient.*

Replacement Elements 2-35

Introduction 2-3

| | | | |
|--------------------------|-------|------------------------|-------|
| Ace | 4-5 | Kemp | 22 |
| Airtak | 5 | Leybold Hereaus | 22 |
| Airtek | 5-6 | Master Pneumatic | 22 |
| Arrow | 6 | Master Power | 22 |
| Atlas Copco | 6 | Mikropor | 22 |
| Balston | 6-7 | Motivair | 22-23 |
| Binks | 7 | Newcastle | 23 |
| Busch | 7 | Norgren | 23 |
| Comp Air | 8 | Pall/PPC | 23-25 |
| Deltech | 8-9 | Parker | 25 |
| Domnick Hunter | 9-10 | Piab | 25 |
| Ewo | 10 | Pioneer | 25-26 |
| Festo | 10 | Pneumatech | 26-28 |
| Finite | 11-15 | Pureair | 28 |
| Flair | 15 | Rietschle | 28 |
| Gardner Denver | 15-16 | SMC | 28 |
| Gast | 16 | Speedaire | 29 |
| General Pneumatics | 16 | Sullair | 29 |
| Graham White | 16 | Technolab | 29 |
| Great Lakes Air | 16-17 | Ultrafilter | 29-30 |
| Hankison | 17-18 | Van Air | 30-32 |
| Headline | 19 | Walker | 32 |
| Henderson | 19-20 | Watts | 32-33 |
| Hross | 20 | Wilkerson | 33-34 |
| Ingersoll-Rand | 20 | Xebec | 34 |
| IPAC | 20-21 | Zander | 34 |
| Kaeser | 21 | Zeks | 35 |
| | | Zurn | 35 |



Advanced Media Structure

Numatics Coalescing Media

Typical coalescing media on the market today utilizes multilayered or mechanically wound media. This type of media allows particulate to plug the outer layer shortening the service life and change intervals.

Numatics developed a proprietary weave of inorganic microfibers of different diameters. Our media is vacuum formed to create elements made out of millions of complex tortuous paths of varying density. This design allows particles to be trapped through the entire cross section of the filter, lowering pressure drop and maximizing capacity.

Numatics media is ideally suited for multiple compressed air applications. Our media is available in various temperature ranges and is compatible with compressed air and non flammable / non toxic gases.



Numatics coalescing media is ideally suited for oil/water separation or hydrocarbon removal.

Applications include: compressor dryer room, industrial/instrument air, food packaging, utilizing our coarse, fine and ultra fine coalescing media.

Numatics Particulate Media

The service life of any media is a function of the solid contaminant to which the filter media is subjected. In order to maintain the same flow through put as the media becomes contaminated requires an increase in pressure drop. Numatics offers pleated media which significantly increases surface area extending service life.

Numatics has resin-impregnated media to provide high performance particulate removal in applications ranging from food processing to industrial filtration.

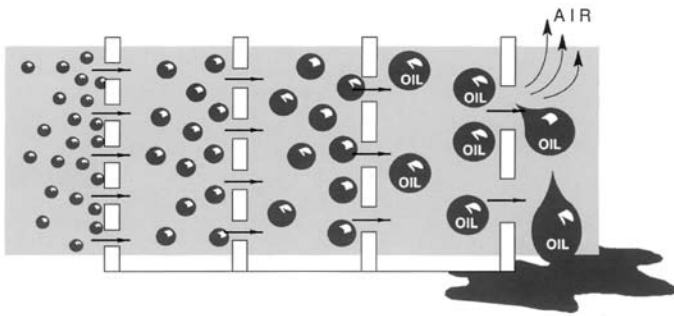


Numatics particulate media features resin impregnation providing high performance particulate removal as a coalescing pre filter or for applications ranging from food processing to industrial.

Para Información de contacto de su oficina mas cercana visite www.mro.com.mx



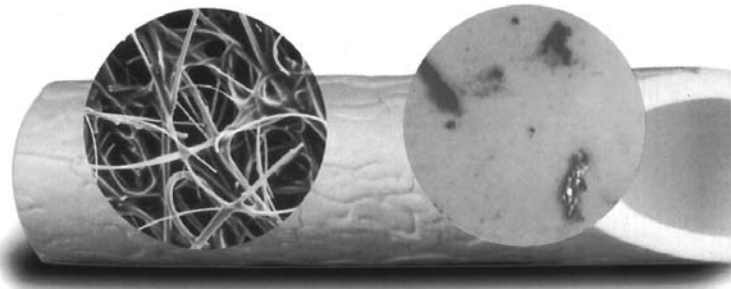
The science of coalescing filtration



Air flows from the inside to the outside of the element through progressively larger openings in the media. As contamination moves through the element, solid particles are trapped and liquids are formed into large droplets. As the air exits the element, surface tension holds the liquids and allows them to drain to the bottom.

The 0.3 micron borosilicate glass fiber element, when magnified 228x (left), shows deep, tortuous paths and large air pockets which provide high performance contaminate removal and longer life.

Contamination removal from a typical compressed air line with 0.3 micron media is shown magnified 40x (right). The contamination contains hydrocarbon (black), oil (opaque drops), and metal fragments (shiny spots).

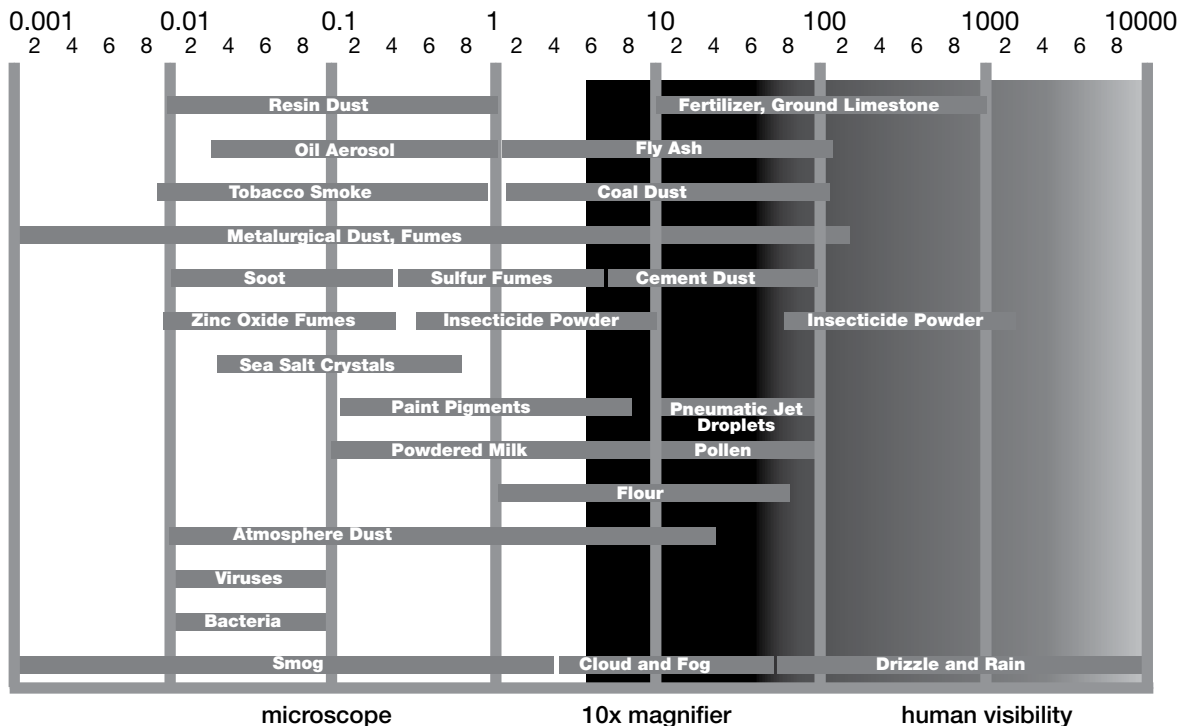


Scanning electron micrograph (at 228x)

Dirty filter magnification (at 40x)

With Numatics® elements like the one on the left installed in your system, the contamination on the right won't get to where it can cause damage. Your system lasts longer and costs less.

What you get is not always what you see





Replacement Filter Elements

| Ace™ | | |
|--------------------|-------------------------|------------------------------|
| | <i>Ace™ part number</i> | <i>Numatics™ replacement</i> |
| Particulate | EF-15P | RAEF15P |
| | EF-60P | RAEF60P |
| | EF-88P | RAEF88P |
| | EF-120P | RAEF120P |
| | EF-150P | RAEF150P |
| | EF-175P | RAEF175P |
| | EF-295P | RAEF295P |
| | EF-350P | RAEF350P |
| | EF-500P | RAEF500P |
| | EF-712P | RAEF712P |
| | EF-888P | RAEF888P |
| | EF-1065P | RAEF1065P |
| | E20COS | RAE20P |
| | E30COS | RAE30P |
| | E63COS | RAE63P |
| | E127COS | RAE127P |
| | E147COS | RAE147P |
| | E176COS | RAE176P |
| | E318COS | RAE318P |
| | E427COS | RAE427P |
| | E470COS | RAE470P |
| | E675COS | RAE675P |
| | E954COS | RAE954P |
| | E1000COS | RAE1000P |
| | E1300COS | RAE1300P |
| | E1530COS | RAE1530P |

| | | |
|-------------------|----------|-----------|
| Coalescers | EF-15X | RAEF15U |
| | EF-60X | RAEF60U |
| | EF-88X | RAEF88U |
| | EF-120X | RAEF120U |
| | EF-150X | RAEF150U |
| | EF-175X | RAEF175U |
| | EF-295X | RAEF295U |
| | EF-350X | RAEF350U |
| | EF-500X | RAEF500U |
| | EF-712X | RAEF712U |
| | EF-888X | RAEF888U |
| | EF-1065X | RAEF1065U |
| | EF-15Y | RAEF15S |
| | EF-60Y | RAEF60S |
| | EF-88Y | RAEF88S |
| | EF-120Y | RAEF120S |
| | EF-150Y | RAEF150S |
| | EF-175Y | RAEF175S |
| | EF-295Y | RAEF295S |
| | EF-350Y | RAEF350S |
| | EF-500Y | RAEF500S |
| | EF-712Y | RAEF712S |
| | EF-888Y | RAEF888S |
| | EF-1065Y | RAEF1065S |

| | <i>Ace™ part number</i> | <i>Numatics™ replacement</i> |
|----------------------------|-------------------------|------------------------------|
| Coalescers (cont'd) | E20CI | RAE20U |
| | E30CI | RAE30U |
| | E63CI | RAE63U |
| | E127CI | RAE127U |
| | E147CI | RAE147U |
| | E176CI | RAE176U |
| | E318CI | RAE318U |
| | E427CI | RAE427U |
| | E470CI | RAE470U |
| | E675CI | RAE675U |
| | E954CI | RAE954U |
| | E1000CI | RAE1000U |
| | E1300CI | RAE1300U |
| | E1530CI | RAE1530U |
| | E20COI | RAE20S |
| | E30COI | RAE30S |
| | E63COI | RAE63S |
| | E127COI | RAE127S |
| | E147COI | RAE147S |
| | E176COI | RAE176S |
| | E318COI | RAE318S |
| | E427COI | RAE427S |
| | E470COI | RAE470S |
| | E675COI | RAE675S |
| | E954COI | RAE954S |
| | E1000COI | RAE1000S |
| | E1300COI | RAE1300S |
| E1530COI | RAE1530S | |

| | | |
|------------------|----------|-----------|
| Adsorbers | EF-15A | RAEF15A |
| | EF-30A | RAEF30A |
| | EF-60A | RAEF60A |
| | EF-88A | RAEF88A |
| | EF-120A | RAEF120A |
| | EF-150A | RAEF150A |
| | EF-175A | RAEF175A |
| | EF-295A | RAEF295A |
| | EF-350A | RAEF350A |
| | EF-500A | RAEF500A |
| | EF-712A | RAF712A |
| | EF-888A | RAEF888A |
| | EF-1065A | RAEF1065A |
| | E20AB | RAE20A |
| | E30AB | RAE30A |
| | E63AB | RAE63A |
| | E127AB | RAE127A |
| | E147AB | RAE147A |
| | E176AB | RAE176A |
| | E318AB | RAE318A |
| | E427AB | RAE427A |
| | E470AB | RAE470A |
| | E675AB | RAE675A |



| | <i>Ace™ part number</i> | <i>Numatics™ replacement</i> |
|-------------------------------|-------------------------|------------------------------|
| Adsorbers (cont'd) | E954AB | RAE954A |
| | E1000AB | RAE1000A |
| | E1300AB | RAE1300A |
| | E1530AB | RAE1530A |

| | <i>Airtak part number</i> | <i>Numatics™ replacement</i> |
|-------------------------|---------------------------|------------------------------|
| Activated Carbon | A-AU | RAAAUA |
| | B-AU | RABAUUA |
| | C-AU | RACAUUA |
| | D-AU | RADAUUA |
| | F-AU | RAFAUA |
| | G-AU | RAGAUUA |
| | H-AU | RAHAUA |
| | I-AU | RAIAUA |
| | J-AU | RAJAUA |

Airtak™

| | <i>Airtak part number</i> | <i>Numatics™ replacement</i> |
|--------------------|---------------------------|------------------------------|
| Particulate | A-IU | RAAIUP |
| | B-IU | RABIUP |
| | C-IU | RACIUP |
| | D-IU | RADIUP |
| | F-IU | RAFIUP |
| | G-IU | RAGIUP |
| | H-IU | RAHIUP |
| | I-IU | RAIIUP |
| | J-IU | RAJIUP |

| | <i>Airtak part number</i> | <i>Numatics™ replacement</i> |
|-------------------------------|---------------------------|------------------------------|
| High Temp. Particulate | A-DS | RAADSUS |
| | B-DS | RABDSUS |
| | C-DS | RACDSUS |
| | D-DS | RADDSUS |
| | F-DS | RAFDSUS |
| | G-DS | RAGDSUS |
| | H-DS | RAHDSUS |
| | I-DS | RAIDSUS |
| | J-DS | RAJDSUS |

| | <i>Airtak part number</i> | <i>Numatics™ replacement</i> |
|-------------------|---------------------------|------------------------------|
| Coalescers | A-TC | RAATCS |
| | B-TC | RABTCS |
| | C-TC | RACTCS |
| | D-TC | RADTCS |
| | F-TC | RAFTCS |
| | G-TC | RAGTCS |
| | H-TC | RAHTCS |
| | I-TC | RAITCS |
| | J-TC | RAJTCS |
| | A-GC | RAAGCT |
| | B-GC | RABGCT |
| | C-GC | RACGCT |
| | D-GC | RADGCT |
| | F-GC | RAFGCT |
| | G-GC | RAGGCT |
| | H-GC | RAHGCT |
| | I-GC | RAIGCT |
| | J-GC | RAJGCT |
| | A-PC | RAAPCU |
| | B-PC | RABPCU |
| | C-PC | RACPCU |
| | D-PC | RADPCU |
| | F-PC | RAFPCU |
| | G-PC | RAGPCU |
| | H-PC | RAHPCU |
| | I-PC | RAIPCU |
| J-PC | RAJPCU | |

Airtek™

| | <i>Airtak part number</i> | <i>Numatics™ replacement</i> |
|-------------------|---------------------------|------------------------------|
| Prefilters | CF3314FE | RA3314FE |
| | JE3310FE | RA3310FE |
| | JE-F0020 | RAF0020 |
| | JE-F0050 | RAF0050 |
| | JE-F0110 | RAF0110 |
| | JE-F0150 | RAF0150 |
| | JE-F0200 | RAF0200 |
| | JE-F0300 | RAF0300 |
| | JE-F0400 | RAF0400 |
| | JE-F0600 | RAF0600 |
| | JE-F0800 | RAF0800 |
| | JE-F1000 | RAF1000 |
| | JE-F1600 | RAF1600 |
| | JE-F2000 | RAF2000 |
| | JE-F3000 | RAF3000 |

| | <i>Airtak part number</i> | <i>Numatics™ replacement</i> |
|---------------------------|---------------------------|------------------------------|
| High Temp. Filters | JE-F1000H | RAF1000HT |
| | JE-F1600H | RAF1600HT |
| | JE-F2000H | RAF2000HT |
| | JE-F3000H | RAF3000HT |

| | <i>Airtak part number</i> | <i>Numatics™ replacement</i> |
|-------------------|---------------------------|------------------------------|
| Coalescers | CF3310CE | RA3310CE |
| | CF3310CE-1 | RA3310CE-1 |
| | CF3314CE | RACF3314CE |
| | JE-C0020 | RAC0020 |
| | JE-C0050 | RAC0050 |
| | JE-C0110 | RAC0110 |
| | JE-C0150 | RAC0150 |
| | JE-C0200 | RAC0200 |



Replacement Filter Elements

| | Airtek part number | Numatics™ replacement |
|----------------------------|--------------------|-----------------------|
| Coalescers (cont'd) | JE-C0300 | RAC0300 |
| | JE-C0400 | RAC0400 |
| | JE-C0600 | RAC0600 |
| | JE-C0800 | RAC0800 |
| | JE-C1000 | RAC1000 |
| | JE-C1600 | RAC1600 |
| | JE-C2000 | RAC2000 |
| | JE-C3000 | RAC3000 |

Arrow™

| | Arrow part number | Numatics™ replacement |
|------------------|-------------------|-----------------------|
| Prefilter | EKF3NHF-3 | RA3NHFPH |
| | EKF3N1-3 | RA3N1-3P |

| | | |
|-------------------|--------|---------|
| Coalescers | EKF502 | RA502SU |
| | EKF505 | RA505SU |
| | EKF508 | RA508SU |
| | EKF510 | RA510SU |
| | EKF518 | RA518SU |
| | EKF519 | RA519SU |
| | EKF528 | RA528SU |
| | EKF529 | RA529SU |
| | EKF5N2 | RA5N2SU |
| | EKF5X2 | RA5X2SU |
| | EKF5X3 | RA5X3SU |
| | EKF5X4 | RA5X4SU |
| | EKF5X5 | RA5X5SU |
| | EKF5X6 | RA5X6SU |
| | EKF5X8 | RA5X8SU |

| | | |
|------------------------|---------|---------|
| Fine Coalescers | EK55 | RA55SU |
| | EK55A | RA55RU |
| | EKF502A | RA502RU |
| | EKF505A | RA505RU |
| | EKF508A | RA508RU |
| | EKF510A | RA510RU |
| | EKF518A | RA518RU |
| | EKF519A | RA519RU |
| | EKF528A | RA528RU |
| | EKF529A | RA529RU |
| | EKF5N2A | RA5N2RU |
| | EKF5X2A | RA5X2RU |
| | EKF5X3A | RA5X3RU |
| | EKF5X4A | RA5X4RU |
| | EKF5X5A | RA5X5RU |
| | EKF5X6A | RA5X6RU |
| | EKF5X8A | RA5X8RU |

| | Arrow part number | Numatics replacement |
|-----------------------|-------------------|----------------------|
| Vapor Adsorber | EKF602 | RA602A |
| | EKF605 | RA605A |
| | EKF608 | RA608A |
| | EKF610 | RA610A |
| | EKF618 | RA618A |
| | EKF619 | RA619A |
| | EKF628 | RA628A |
| | EKF629 | RA629A |

| | | |
|--------------------|--------|---------|
| Oil Remover | EKF402 | RA402UU |
| | EKF405 | RA405UU |
| | EKF408 | RA408UU |
| | EKF410 | RA410UU |
| | EKF418 | RA418UU |
| | EKF419 | RA419UU |
| | EKF428 | RA428UU |
| | EKF429 | RA429UU |
| | EKF4N2 | RA4N2UU |
| | EKF4X2 | RA4X2UU |
| | EKF4X3 | RA4X3UU |
| | EKF4X4 | RA4X4UU |
| | EKF4X5 | RA4X5UU |
| | EKF4X6 | RA4X6UU |
| | EKF4X8 | RA4X8UU |

Atlas Copco™

| | Atlas Copco part number | Numatics™ replacement |
|--------------------|-------------------------|-----------------------|
| Particulate | DDP120 | RADDP120P |
| | DDP280 | RADDP280P |

| | | |
|------------------|-------|----------|
| Coalescer | DD120 | RADD120U |
| | DD260 | RADD260U |
| | DD280 | RADD280U |
| | PD120 | RAPD120S |
| | PD260 | RAPD260S |
| | PD280 | RAPD280S |

| | | |
|---------------------------|-------|----------|
| Activated Charcoal | QD120 | RAQD120A |
| | QD280 | RAQD280A |

Balston™

| | Balston part number | Numatics™ replacement |
|---------------------------|---------------------|-----------------------|
| Direct Replacement | 050-03-BX | RB05003S |
| | 050-03-CX | RB05003T |
| | 050-03-DX | RB05003U |
| | 050-05-BX | RB05005S |
| | 050-05-CX | RB05005T |
| | 050-05-DX | RB05005U |
| | 050-11-BX | RB05011S |
| | 050-11-CX | RB05011T |



| | Balston part number | Numatics™ replacement |
|------------------------------------|---------------------|-----------------------|
| Direct Replacement (cont'd) | 050-11-DX | RB05011U |
| | 100-09-BX | RB10009S |
| | 100-09-CX | RB10009T |
| | 100-09-DX | RB10009U |
| | 100-12-BX | RB10012S |
| | 100-12-CX | RB10012T |
| | 100-12-DX | RB10012U |
| | 100-18-BX | RB10018S |
| | 100-18-CX | RB10018T |
| | 100-18-DX | RB10018U |
| | 100-25-BX | RB10025S |
| | 100-25-CX | RB10025T |
| | 100-25-DX | RB10025U |
| | 130-14-BX | RB13014S |
| | 130-14-CX | RB13014T |
| | 130-14-DX | RB13014U |
| | 150-19-BX | RB15019S |
| | 150-19-CX | RB15019T |
| | 150-19-DX | RB15019U |
| | 200-16-BX | RB20016S |
| | 200-16-CX | RB20016ST |
| | 200-16-DX | RB20016SU |
| | 200-35-BX | RB20035S |
| | 200-35-CX | RB20035T |
| | 200-35-DX | RB20035U |
| | 200-80-BX | RB20080S |
| 200-80-CX | RB20080ST | |
| 200-80-DX | RB20080SU | |

| | | |
|------------------------|-----------|----------|
| Carbon Adsorber | CI-100-12 | RB10012A |
| | CI-100-25 | RB10025A |
| | CI-150-19 | RB15019A |
| | CI-200-35 | RB20035A |
| | CI-200-80 | RB20080A |

| | | |
|--------------------|-----------|-----------|
| Sterile Air | 100-12-SA | RB1012RIS |
| | 100-18-SA | RB1018RIS |
| | 150-19-SA | RB1519RIS |
| | 200-35-SA | RB2035RIS |
| | 200-80-SA | RB2080RIS |

| | | |
|---------------------------------|-----------|----------|
| Specialty Gas Filtration | 050-03-BQ | RB0503SI |
| | 050-03-CQ | RB0503TI |
| | 050-03-DQ | RB0503UI |
| | 050-05-BQ | RB0505SI |
| | 050-05-CQ | RB0505TI |
| | 050-05-DQ | RB0505UI |
| | 050-11-BQ | RB0511SI |
| | 050-11-CQ | RB0511TI |
| | 050-11-DQ | RB0511UI |

| | Balston part number | Numatics™ replacement |
|--|---------------------|-----------------------|
| Specialty Gas Filtration (cont'd) | 100-12-BQ | RB1012SI |
| | 100-12-CQ | RB1012TI |
| | 100-12-DQ | RB1012UI |
| | 100-18-BQ | RB1018SI |
| | 100-18-CQ | RB1018TI |
| | 100-18-DQ | RB1018UI |
| | 100-25-BQ | RB1025SI |
| | 100-25-CQ | RB1025TI |
| | 100-25-DQ | RB1025UI |
| | 150-19-BQ | RB1519SI |
| | 150-19-CQ | RB1519TI |
| | 150-19-DQ | RB1519UI |
| | 200-35-BQ | RB2035SI |
| | 200-35-CQ | RB2035TI |
| | 200-35-DQ | RB2035UI |
| | 200-80-BQ | RB2080SI |
| 200-80-CQ | RB2080TI | |
| 200-80-DQ | RB2080UI | |

| | | |
|-----------------------|-------------|----------|
| Vacuum Exhaust | 200-35-371H | RB20035H |
| | 200-80-371H | RB20080H |

| | | |
|---------------------|-----------|----------|
| Steam Filter | 200-35-SR | RB2035SR |
| | 200-75-SR | RB2075SR |

| | | |
|--------------------------------|------------|-------|
| Instrumentation Filters | 9933-05-BQ | PLS-T |
| | 9933-05-DQ | PLU-T |

| Binks™ | | |
|------------------|-------------------|-----------------------|
| | Binks part number | Numatics™ replacement |
| Prefilter | 86-1006 | RB861006 |
| | 86-1017 | RB861017 |
| | 86-1018 | RB861018 |

| | | |
|------------------|--------|---------|
| Coalescer | 86-617 | RB86617 |
| | 86-952 | RB86952 |
| | 86-972 | RB86972 |
| | 86-982 | RB86982 |

| Busch™ | | |
|------------------|-------------------|-----------------------|
| | Busch part number | Numatics™ replacement |
| Coalescer | 0532-901-520 | RB304U |
| | 0532-000-508 | RB303U |
| | 18980 | RB18980U |
| | 532-302 | RB302U |
| | 532-303 | RB303U |
| | 532-304 | RB304U |
| | 532.082.01 | RB303U |
| | 532.507.01 | RB507U |
| | 532.509.01 | RB509U |



Replacement Filter Elements

Comp Air™

| | Comp Air part number | Numatics™ replacement |
|------------------------|----------------------|-----------------------|
| General Purpose | CE 0005 B | RCE0005U |
| | CE 0010 B | RCE0010U |
| | CE 0018 B | RCE0018U |
| | CE 0036 B | RCE0036U |
| | CE 0087 B | RCE0087U |
| | CE 0132 B | RCE0132U |
| | CE 0198 B | RCE0198U |
| | CE 0258 B | RCE0258U |
| | CE 0372 B | RCE0372U |

| | | |
|----------------------------------|-----------|----------|
| High Efficiency Coalescer | CE 0005 C | RCE0005S |
| | CE 0010 C | RCE0010S |
| | CE 0018 C | RCE0018S |
| | CE 0036 C | RCE0036S |
| | CE 0087 C | RCE0087S |
| | CE 0132 C | RCE0132S |
| | CE 0198 C | RCE0198S |
| | CE 0258 C | RCE0258S |
| | CE 0372 C | RCE0372S |

| | | |
|-------------------------|-----------|----------|
| Activated Carbon | CE 0005 D | RCE0005A |
| | CE 0010 D | RCE0010A |
| | CE 0018 D | RCE0018A |
| | CE 0036 D | RCE0036A |
| | CE 0087 D | RCE0087A |
| | CE 0132 D | RCE0132A |
| | CE 0198 D | RCE0198A |
| | CE 0258 D | RCE0258A |
| | CE 0372 D | RCE0372A |

| | | |
|------------------------------------|-----------|----------|
| General Purpose Dust Filter | CE 0005 E | RCE0005U |
| | CE 0010 E | RCE0010U |
| | CE 0018 E | RCE0018U |
| | CE 0036 E | RCE0036U |
| | CE 0087 E | RCE0087U |
| | CE 0132 E | RCE0132U |
| | CE 0198 E | RCE0198U |
| | CE 0258 E | RCE0258U |
| | CE 0372 E | RCE0372U |

| | | |
|-------------------------|-----------|----------|
| Activated Carbon | CE 0004 D | RCE0004A |
| | CE 0008 D | RCE0008A |
| | CE 0015 D | RCE0015A |
| | CE 0024 D | RCE0024A |
| | CE 0039 D | RCE0039A |
| | CE 0051 D | RCE0051A |

Deltech™

| | Deltech part number | Numatics™ replacement |
|--|---------------------|-----------------------|
| Prefilter (*) - Number of Elements | 518E | RD518E (2) |
| | 519E | RD519E (3) |
| | 520E | RD520E (4) |
| | 521E | RD521E (6) |
| | 522E | RD522E (10) |
| | 523E | RD523E (14) |
| | 524E | RD524E (20) |
| | 525E | RD525E (24) |
| | 526E | RD526E (30) |
| | D-0050-PFE | RD0050P |
| | D-0100-PFE | RD0100P |
| | D-0300-PFE | RD0300P |
| | D-0405-PFE | RD0405P |
| | D-0510-PFE | RD0510P |
| | D-0850-PFE | RD0850P |
| | D-1020-PFE | RD1020P |
| | D-1225-PFE | RD1225P |
| | D-1450-PFE | RD1450P |

| | | |
|--|------------|--------------|
| Coalescer (*) - Number of Elements | 811E | RD811E |
| | 812E | RD812E |
| | 813E | RD813E |
| | 814E | RD814E |
| | 815E | RD815E |
| | 816E | RD816E |
| | 817E | RD817E |
| | 820E | RD820ES (2) |
| | 821E | RD821ES (3) |
| | 822E | RD822ES (4) |
| | 823E | RD823ES (6) |
| | 824E | RD824ES (8) |
| | 825E | RD825ES (10) |
| | 826E | RD826ES (15) |
| | 827E | RD827ES (20) |
| | 828E | RD828ES (25) |
| | 829E | RD829ES (30) |
| | D-0050-CCE | RD050U |
| | D-0050-CFE | RD0050S |
| | D-0250-CCE | RD0250U |
| | D-0250-CFE | RD0250S |
| | D-0400-CCE | RD0400U |
| | D-0400-CFE | RD0400S |
| | D-0600-CCE | RD0600U |
| | D-0600-CFE | RD0600S |
| | D-0750-CCE | RD0750U |
| | D-0750-CFE | RD0750S |
| | D-1000-CCE | RD1000U |
| | D-1000-CFE | RD1000S |
| | D-1200-CCE | RD1200U |
| | D-1200-CFE | RD1200S |
| | 8101PFD | RD8101PFD |
| | 8101HFD | RD8101HFD |



| | <i>Deltech part number</i> | <i>Numatics™ replacement</i> |
|-----------------|----------------------------|------------------------------|
| Adsorber | D-0020-VFE | RD0020A |
| | D-0050-VFE | RD0050A |
| | D-0175-VFE | RD0175A |
| | D-0250-VFE | RD0250A |
| | D-0400-VFE | RD0400A |
| | D-0600-VFE | RD0600A |
| | D-0750-VFE | RD0750A |
| | D-1000-VFE | RD1000A |
| | D-1200-VFE | RD1200A |

Domnick Hunter®

| | <i>D.Hunter part number</i> | <i>Numatics™ replacement</i> |
|------------------------|-----------------------------|------------------------------|
| General Purpose | C12MSU | RDC12MSU |
| | E006AO | RD006U |
| | K006AO | RD006U |
| | K009AO | RD009U |
| | E013AO | RD013U |
| | K013AO | RD013U |
| | K017AO | RD017U |
| | E025AO | RD025U |
| | K025AO | RD025U |
| | K035AO | RD035U |
| | E040AO | RD040U |
| | K040AO | RD040U |
| | K058AO | RD058U |
| | E065AO | RD065U |
| | K065AO | RD065U |
| | E085AO | RD085U |
| | K085AO | RD085U |
| | K145AO | RD145U |
| | E120AO | RD195U |
| | K120AO | RD195U |
| | E195AO | RD195U |
| | K195AO | RD195U |
| | E200AO | RD295U |
| | K200AO | RD295U |
| | K220AO | RD220U |
| | E295AO | RD295U |
| | K295AO | RD295U |
| | K330AO | RD330U |
| | E400AO | RD400U |
| | K400AO | RD400U |
| | K430AO | RD430U |
| | E500AO | RD500U |
| K500AO | RD500U | |
| K620AO | RD620U | |

| | <i>D.Hunter part number</i> | <i>Numatics™ replacement</i> |
|------------------------------------|-----------------------------|------------------------------|
| General Purpose Dust Filter | K006AR | RD006U |
| | K009AR | RD009U |
| | K013AR | RD013U |
| | K017AR | RD017U |
| | K025AR | RD025U |
| | K030AR | RD030U |
| | K035AR | RD035U |
| | K040AR | RD040U |
| | K058AR | RD058U |
| | K085AR | RD085U |
| | K145AR | RD145U |
| | K195AR | RD195U |
| | K200AR | RD295U |
| | K220AR | RD220U |
| | K295AR | RD295U |
| | K330AR | RD330U |
| | K400AR | RD400U |
| | K430AR | RD430U |
| K500AR | RD500U | |
| K620AR | RD620U | |

| | <i>D.Hunter part number</i> | <i>Numatics™ replacement</i> |
|-----------------------------------|-----------------------------|------------------------------|
| High Efficiency Coalescing | C12EPOS | RDC12EPOS |
| | E006AA | RD006S |
| | K006AA | RD006S |
| | K009AA | RD009S |
| | E013AA | RD013S |
| | K013AA | RD013S |
| | K017AA | RD017S |
| | E025AA | RD025S |
| | K025AA | RD025S |
| | K035AA | RD035S |
| | E040AA | RD040S |
| | K040AA | RD040S |
| | K058AA | RD058S |
| | E065AA | RD065S |
| | K065AA | RD065S |
| | E085AA | RD085S |
| | K085AA | RD085S |
| | E120AA | RD195S |
| | K120AA | RD195S |
| | K145AA | RD145S |
| | E195AA | RD195S |
| | K195AA | RD195S |
| | E200AA | RD295S |
| | K200AA | RD295S |
| K220AA | RD220S | |
| E295AA | RD295S | |
| K295AA | RD295S | |
| K330AA | RD330S | |
| E400AA | RD400S | |
| K400AA | RD400S | |



Replacement Filter Elements

| | D.Hunter part number | Numatics™ replacement |
|--|----------------------|-----------------------|
| High Efficiency Coalescing (cont'd) | K430AA | RD430S |
| | E500AA | RD500S |
| | K500AA | RD500S |
| | K620AA | RD620S |

| | | |
|------------------------------------|---------|--------|
| High Efficiency Dirt Filter | K006AAR | RD006S |
| | K009AAR | RD009S |
| | K013AAR | RD013S |
| | K017AAR | RD017S |
| | K025AAR | RD025S |
| | K035AAR | RD035S |
| | K040AAR | RD040S |
| | K058AAR | RD058S |
| | K065AAR | RD065S |
| | K085AAR | RD085S |
| | K145AAR | RD145S |
| | K195AAR | RD195S |
| | K200AAR | RD295S |
| | K220AAR | RD220S |
| | K295AAR | RD295S |
| | K330AAR | RD330S |
| | K400AAR | RD400S |
| K430AAR | RD430S | |
| K500AAR | RD500S | |
| K620AAR | RD620S | |

| | | |
|---|--------|--------|
| Ultra High Efficiency Coalescing | K006AX | RD006R |
| | K009AX | RD009R |
| | K013AX | RD013R |
| | K017AX | RD017R |
| | K025AX | RD025R |
| | K030AX | RD030R |
| | K035AX | RD035R |
| | K040AX | RD040R |
| | K058AX | RD058R |
| | K085AX | RD085R |
| | K145AX | RD145R |
| | K195AX | RD195R |
| | K200AX | RD295R |
| | K220AX | RD220R |
| | K295AX | RD295R |
| | K400AX | RD400R |
| | K430AX | RD430R |
| K500AX | RD500R | |
| K620AX | RD620R | |

| | | |
|--------------------------------|---------|---------|
| Oil Vapor/ Odor Removal | E006ACS | RD006A |
| | K006AC | RD006AX |
| | K006ACS | RD006A |
| | K009ACS | RD009A |
| | E013ACS | RD013A |
| | K013AC | RD013AX |

| | D.Hunter part number | Numatics™ replacement |
|---|----------------------|-----------------------|
| Oil Vapor/ Odor Removal (cont'd) | K017ACS | RD017A |
| | E025ACS | RD025A |
| | K025AC | RD025AX |
| | K025ACS | RD025A |
| | K035ACS | RD035A |
| | E040ACS | RD040A |
| | K040AC | RD040AX |
| | K040ACS | RD040A |
| | K058ACS | RD058A |
| | E065ACS | RD065A |
| | K065AC | RD065AX |
| | K065ACS | RD065A |
| | E085ACS | RD085A |
| | K085AC | RD085AX |
| | K085ACS | RD085A |
| | E120ACS | RD195A |
| | K120ACS | RD195A |
| | K145ACS | RD145A |
| | E195ACS | RD195A |
| | K195ACS | RD195A |
| | E200ACS | RD295A |
| | K200ACS | RD295A |
| | K220ACS | RD220A |
| | E295ACS | RD295A |
| K295ACS | RD295A | |
| K330ACS | RD330A | |
| E400ACS | RD400A | |
| K400ACS | RD400A | |
| K430ACS | RD430A | |
| E500ACS | RD500A | |
| K500ACS | RD500A | |
| K620ACS | RD620A | |

EWO™

| | EWO part number | Numatics™ replacement |
|------------------|-----------------|-----------------------|
| Prefilter | 429/152 | RE429152U |

| | | |
|------------------|-------|---------|
| Coalescer | 430/2 | RE4302S |
|------------------|-------|---------|

Festo™

| | Festo part number | Numatics™ replacement |
|-----------------|-------------------|-----------------------|
| Elements | LFMP-3/4-1-C | RF15612 |
| | LFMBP-1-H | RFLFMBP1HU |
| | LFP-D-MAXI-5M | RFLFPDMAXI5M |
| | LFP-D-MAXI-40M | RFLFPDMAXI40M |
| | LFP-D-MIDI-40M-U | RFLFPDMIDI40M |
| | LFP-D-MIDI-5M | RFLFPDMIDI5M |
| | LFPD-MINI-5M | RFLFPDMINI5M |
| | LFPD-MINI-40M | RFLFPDMINI40M |

Para Información de contacto de su oficina mas cercana visite www.mro.com.mx



Finite™

| | Finite part number | Numatics™ replacement |
|------------------|--------------------|-----------------------|
| Prefilter | 3PU10-025 | RF10025P |
| | 3PU10-050 | RF10050P |
| | 3PU15-060 | RF15060P |
| | 3PU15-095 | RF15095P |
| | 3PU20-130 | RF20130P |
| | 3PU20-187 | RF20187P |
| | 3PU25-130 | RF25130P |
| | 3PU25-187 | RF25187P |
| | 3PU25-235 | RF25235P |
| | 3PU25-280 | RF25280P |
| | 3PU35-280 | RF35280P |
| | 3PU51-280 | RF51280P |
| | 3PU85-250 | RF85250P |
| | 3PU85-360 | RF85360P |

| | Finite part number | Numatics™ replacement |
|-----------------------------------|--------------------|-----------------------|
| High Temp Prefilter (350°) | 3PS10-025 | RF10025PS |
| | 3PS10-050 | RF10050PS |
| | 3PS15-060 | RF15060PS |
| | 3PS15-095 | RF15095PS |
| | 3PS20-130 | RF20130PS |
| | 3PS20-187 | RF20187PS |
| | 3PS25-130 | RF25130PS |
| | 3PS25-187 | RF25187PS |
| | 3PS25-235 | RF25235PS |
| | 3PS25-280 | RF25280PS |
| | 3PS35-280 | RF35280PS |
| | 3PS51-280 | RF51280PS |
| | 3PS85-250 | RF85250PS |
| | 3PS85-360 | RF85360PS |

| | Finite part number | Numatics™ replacement |
|-------------------------|--------------------|-----------------------|
| Carbon Adsorbers | AU10-025 | RF10025A |
| | AU10-050 | RF10050A |
| | AU15-060 | RF15060A |
| | AU15-095 | RF15095A |
| | AU20-130 | RF20130A |
| | AU20-187 | RF20187A |
| | AU25-130 | RF25130A |
| | AU25-187 | RF25187A |
| | AU25-235 | RF25235A |
| | AU25-280 | RF25280A |
| | AU35-280 | RF35280A |
| | AU51-280 | RF51280A |
| | AV51-280 | RF51280AV |
| | AU85-250 | RF85250A |
| | AV85-250 | RF85250AV |
| | AU85-360 | RF85360A |
| | AV85-360 | RF85360AV |

| | Finite part number | Numatics™ replacement |
|------------------|--------------------|-----------------------|
| Coalescer | CLS112-10 | RF11210U |
| | 2HM06-013 | RF06013R |
| | 4HM06-013 | RF06013R |
| | 6HM06-013 | RF06013S |
| | 8HM06-013 | RF06013T |
| | 10HM06-013 | RF06013U |
| | 2C10-025 | RF10025R |
| | 4C10-025 | RF10025R |
| | 6C10-025 | RF10025S |
| | 8C10-025 | RF10025T |
| | 10C10-025 | RF10025U |
| | 2CU10-025 | RF10025RU |
| | 4CU10-025 | RF10025RU |
| | 6CU10-025 | RF10025SU |
| | 8CU10-025 | RF10025TU |
| | 10CU10-025 | RF10025UU |
| | 2QU10-025 | RF10025RP |
| | 4QU10-025 | RF10025RP |
| | 6QU10-025 | RF10025SP |
| | 8QU10-025 | RF10025TP |
| | 10QU10-025 | RF10025UP |
| | 2C10-050 | RF10050R |
| | 4C10-050 | RF10050R |
| | 6C10-050 | RF10050S |
| | 8C10-050 | RF10050T |
| | 10C10-050 | RF10050U |
| | 2CU10-050 | RF1005RU |
| | 4CU10-050 | RF1005RU |
| | 6CU10-050 | RF10050SU |
| | 8CU10-050 | RF10050TU |
| | 10CU10-050 | RF10050UU |
| | 2QU10-050 | RF10050RP |
| | 4QU10-050 | RF10050RP |
| | 6QU10-050 | RF10050SP |
| | 8QU10-050 | RF10050TP |
| | 10QU10-050 | RF10050UP |
| | 2CU10-055 | RF10055RU |
| | 4CU10-055 | RF10055RU |
| | 6CU10-055 | RF10055SU |
| | 8CU10-055 | RF10055TU |
| | 10CU10-055 | RF10055UU |
| | 2QU13-027 | RF13027RP |
| 4QU13-027 | RF13027RP | |
| 6QU13-027 | RF13027SP | |
| 8QU13-027 | RF13027TP | |
| 10QU13-027 | RF13027UP | |
| 2QU13-042 | RF13042RP | |
| 4QU13-042 | RF13042RP | |
| 6QU13-042 | RF13042SP | |



Replacement Filter Elements

| | <i>Finite part number</i> | <i>Numatics™ replacement</i> |
|-------------------------------|---------------------------|------------------------------|
| Coalescer (Cont'd) | 8QU13-042 | RF13042TP |
| | 10QU13-042 | RF13042UP |
| | 2C15-060 | RF15060R |
| | 4C15-060 | RF15060R |
| | 6C15-060 | RF15060S |
| | 8C15-060 | RF15060T |
| | 10C15-060 | RF15060U |
| | 2CU15-060 | RF15060RU |
| | 4CU15-060 | RF15060RU |
| | 6CU15-060 | RF15060SU |
| | 8CU15-060 | RF15060TU |
| | 10CU15-060 | RF15060UU |
| | 2QU15-060 | RF15060RP |
| | 4QU15-060 | RF15060RP |
| | 6QU15-060 | RF15060SP |
| | 8QU15-060 | RF15060TP |
| | 10QU15-060 | RF15060UP |
| | 2C15-095 | RF15095R |
| | 4C15-095 | RF15095R |
| | 6C15-095 | RF15095S |
| | 8C15-095 | RF15095T |
| | 10C15-095 | RF15095U |
| | 2CU15-095 | RF15095RU |
| | 4CU15-095 | RF15095RU |
| | 6CU15-095 | RF15095SU |
| | 8CU15-095 | RF15095TU |
| | 10CU15-095 | RF15095UU |
| | 2QU15-095 | RF15095RP |
| | 4QU15-095 | RF15095RP |
| | 6QU15-095 | RF15095SP |
| | 8QU15-095 | RF15095TP |
| | 10QU15-095 | RF15095UP |
| | 2CU19-187 | RF19187RU |
| | 4CU19-187 | RF19187RU |
| | 6CU19-187 | RF19187SU |
| | 8CU19-187 | RF19187TU |
| | 10CU19-187 | RF19187UU |
| | 2CU20-130 | RF20130RU |
| | 4CU20-130 | RF20130RU |
| | 6CU20-130 | RF20130SU |
| | 8CU20-130 | RF20130TU |
| | 10CU20-130 | RF20130UU |
| 2QU20-130 | RF20130RP | |
| 4QU20-130 | RF20130RP | |
| 6QU20-130 | RF20130SP | |
| 8QU20-130 | RF20130TP | |
| 10QU20-130 | RF20130UP | |
| 2CU20-187 | RF20187RU | |
| 4CU20-187 | RF20187RU | |
| 6CU20-187 | RF20187SU | |
| 8CU20-187 | RF20187TU | |
| 10CU20-187 | RF20187UU | |
| 2QU20-187 | RF20187RP | |

| | <i>Finite part number</i> | <i>Numatics™ replacement</i> |
|-------------------------------|---------------------------|------------------------------|
| Coalescer (Cont'd) | 4QU20-187 | RF20187RP |
| | 6QU20-187 | RF20187SP |
| | 8QU20-187 | RF20187TP |
| | 10QU20-187 | RF20187UP |
| | 2CU25-130 | RF25130RU |
| | 4CU25-130 | RF25130RU |
| | 6CU25-130 | RF25130SU |
| | 8CU25-130 | RF25130TU |
| | 10CU25-130 | RF25130UU |
| | 2QU25-130 | RF25130RP |
| | 4QU25-130 | RF25130RP |
| | 6QU25-130 | RF25130SP |
| | 8QU25-130 | RF25130TP |
| | 10QU25-130 | RF25130UP |
| | 2CU25-187 | RF25187RU |
| | 4CU25-187 | RF25187RU |
| | 6CU25-187 | RF25187SU |
| | 8CU25-187 | RF25187TU |
| | 10CU25-187 | RF25187UU |
| | 2QU25-187 | RF25187RP |
| | 4QU25-187 | RF25187RP |
| | 6QU25-187 | RF25187SP |
| | 8QU25-187 | RF25187TP |
| | 10QU25-187 | RF25187UP |
| | 2CU25-235 | RF25235RU |
| | 4CU25-235 | RF25235RU |
| | 6CU25-235 | RF25235SU |
| | 8CU25-235 | RF25235TU |
| | 10CU25-235 | RF25235UU |
| | 2QU25-235 | RF25235RP |
| | 4QU25-235 | RF25235RP |
| | 6QU25-235 | RF25235SP |
| | 8QU25-235 | RF25235TP |
| | 10QU25-235 | RF25235UP |
| | 2CU25-280 | RF25280RU |
| | 4CU25-280 | RF25280RU |
| | 6CU25-280 | RF25280SU |
| | 8CU25-280 | RF25280TU |
| | 10CU25-280 | RF25280UU |
| | 2QU25-280 | RF25280RP |
| | 4QU25-280 | RF25280RP |
| | 6QU25-280 | RF25280SP |
| 8QU25-280 | RF25280TP | |
| 10QU25-280 | RF25280UP | |
| 2CU35-280 | RF35280RU | |
| 4CU35-280 | RF35280RU | |
| 6CU35-280 | RF35280SU | |
| 8CU35-280 | RF35280TU | |
| 10CU35-280 | RF35280UU | |
| 2QU35-280 | RF35280RP | |
| 4QU35-280 | RF35280RP | |
| 6QU35-280 | RF35280SP | |
| 8QU35-280 | RF35280TP | |



| | <i>Finite part number</i> | <i>Numatics™ replacement</i> |
|-------------------------------|---------------------------|------------------------------|
| Coalescer (Cont'd) | 10QU35-280 | RF35280UP |
| | 2QU51-280 | RF51280RP |
| | 4QU51-280 | RF51280RP |
| | 6QU51-280 | RF51280SP |
| | 8QU51-280 | RF51280TP |
| | 10QU51-280 | RF51280UP |
| | 2QU85-250 | RF85250RP |
| | 4QU85-250 | RF85250RP |
| | 6QU85-250 | RF85250SP |
| | 8QU85-250 | RF85250TP |
| | 10QU85-250 | RF85250UP |
| | 2QU85-360 | RF85360RP |
| | 4QU85-360 | RF85360RP |
| | 6QU85-360 | RF85360SP |
| | 8QU85-360 | RF85360TP |
| 10QU85-360 | RF85360UP | |

| | <i>Finite part number</i> | <i>Numatics™ replacement</i> |
|--|---------------------------|------------------------------|
| Medium Temp. Coalescer (350°) | 2QS51-280 | RF51280RPS |
| | 4QS51-280 | RF51280RPS |
| | 6QS51-280 | RF51280SPS |
| | 8QS51-280 | RF51280TPS |
| | 10QS51-280 | RF51280UPS |
| | 2QS85-250 | RF85250RPS |
| | 4QS85-250 | RF85250RPS |
| | 6QS85-250 | RF85250SPS |
| | 8QS85-250 | RF85250TPS |
| | 10QS85-250 | RF85250UPS |
| | 2QS85-360 | RF85360RPS |
| | 4QS85-360 | RF85360RPS |
| | 6QS85-360 | RF85360SPS |
| | 8QS85-360 | RF85360TPS |
| | 10QS85-360 | RF85360UPS |

| | <i>Finite part number</i> | <i>Numatics™ replacement</i> |
|--|---------------------------|------------------------------|
| High Temp. Coalescer (450°) | 2DS10-025 | RFI10025RS |
| | 4DS10-025 | RFI10025RS |
| | 6DS10-025 | RFI10025SS |
| | 8DS10-025 | RFI10025TS |
| | 10DS10-025 | RFI10025US |
| | 2DS10-050 | RFI10050RS |
| | 4DS10-050 | RFI10050RS |
| | 6DS10-050 | RFI10050SS |
| | 8DS10-050 | RFI10050TS |
| | 10DS10-050 | RFI10050US |
| | 2DS15-060 | RFI15060RS |
| | 4DS15-060 | RFI15060RS |
| | 6DS15-060 | RFI15060SS |
| | 8DS15-060 | RFI15060TS |
| | 10DS15-060 | RFI15060US |
| | 2DS15-095 | RFI15095RS |
| | 4DS15-095 | RFI15095RS |
| | 6DS15-095 | RFI15095SS |
| | 8DS15-095 | RFI15095TS |
| | 10DS15-095 | RFI15095US |

Each element features silicone end seals & metal cores for high temp applications.

| | <i>Finite part number</i> | <i>Numatics™ replacement</i> |
|---|---------------------------|------------------------------|
| High Temp. Coalescer (450°) (Cont'd) | 2DS20-130 | RFI20130RS |
| | 4DS20-130 | RFI20130RS |
| | 6DS20-130 | RFI20130SS |
| | 8DS20-130 | RFI20130TS |
| | 10DS20-130 | RFI20130US |
| | 2DS20-187 | RFI20187RS |
| | 4DS20-187 | RFI20187RS |
| | 6DS20-187 | RFI20187SS |
| | 8DS20-187 | RFI20187TS |
| | 10DS20-187 | RFI20187US |
| | 2DS25-130 | RFI25130RS |
| | 4DS25-130 | RFI25130RS |
| | 6DS25-130 | RFI25130SS |
| | 8DS25-130 | RFI25130TS |
| | 10DS25-130 | RFI25130US |
| | 2DS25-187 | RFI25187RS |
| | 4DS25-187 | RFI25187RS |
| | 6DS25-187 | RFI25187SS |
| | 8DS25-187 | RFI25187TS |
| | 10DS25-187 | RFI25187US |
| | 2DS25-235 | RFI25235RS |
| | 4DS25-235 | RFI25235RS |
| | 6DS25-235 | RFI25235SS |
| | 8DS25-235 | RFI25235TS |
| | 10DS25-235 | RFI25235US |
| | 2DS25-280 | RFI25280RS |
| | 4DS25-280 | RFI25280RS |
| | 6DS25-280 | RFI25280SS |
| | 8DS25-280 | RFI25280TS |
| | 10DS25-280 | RFI25280US |
| | 2DS35-280 | RFI35280RS |
| | 4DS35-280 | RFI35280RS |
| | 6DS35-280 | RFI35280SS |
| | 8DS35-280 | RFI35280TS |
| | 10DS35-280 | RFI35280US |
| | 2DS51-280 | RFI51280RS |
| | 4DS51-280 | RFI51280RS |
| | 6DS51-280 | RFI51280SS |
| | 8DS51-280 | RFI51280TS |
| | 10DS51-280 | RFI51280US |
| 2DV51-280 | RFI51280RV | |
| 4DV51-280 | RFI51280RV | |
| 6DV51-280 | RFI51280SV | |
| 8DV51-280 | RFI51280TV | |
| 10DV51-280 | RFI51280UV | |
| 2DS85-250 | RFI85250RS | |
| 4DS85-250 | RFI85250RS | |
| 6DS85-250 | RFI85250SS | |
| 8DS85-250 | RFI85250TS | |
| 10DS85-250 | RFI85250US | |
| 2DV85-250 | RFI85250RV | |
| 4DV85-250 | RFI85250RV | |
| 6DV85-250 | RFI85250SV | |



Replacement Filter Elements

| | <i>Finite part number</i> | <i>Numatics™ replacement</i> |
|---|---------------------------|------------------------------|
| High Temp. Coalescer (450°) (cont'd) | 8DV85-250 | RFI85250TV |
| | 10DV85-250 | RFI85250UV |
| | 2DS85-360 | RFI85360RS |
| | 4DS85-360 | RFI85360RS |
| | 6DS85-360 | RFI85360SS |
| | 8DS85-360 | RFI85360TS |
| | 10DS85-360 | RFI85360US |
| | 2DV85-360 | RFI85360RV |
| | 4DV85-360 | RFI85360RV |
| | 6DV85-360 | RFI85360SV |
| | 8DV85-360 | RFI85360TV |
| 10DV85-360 | RFI85360UV | |

| | <i>Finite part number</i> | <i>Numatics™ replacement</i> |
|---|---------------------------|------------------------------|
| Coalescers with Plastic Supports | 2IU10-025 | RFI10025RU |
| | 4IU10-025 | RFI10025RU |
| | 6IU10-025 | RFI10025SU |
| | 8IU10-025 | RFI10025TU |
| | 10IU10-025 | RFI10025UU |
| | 2IU10-050 | RFI10050RU |
| | 4IU10-050 | RFI10050RU |
| | 6IU10-050 | RFI10050SU |
| | 8IU10-050 | RFI10050TU |
| | 10IU10-050 | RFI10050UU |
| | 2IU15-060 | RFI15060RU |
| | 4IU15-060 | RFI15060RU |
| | 6IU15-060 | RFI15060SU |
| | 8IU15-060 | RFI15060TU |
| | 10IU15-060 | RFI15060UU |
| | 2IU15-095 | RFI15095RU |
| | 4IU15-095 | RFI15095RU |
| | 6IU15-095 | RFI15095SU |
| | 8IU15-095 | RFI15095TU |
| | 10IU15-095 | RFI15095UU |
| | 2IU20-130 | RFI20130RU |
| | 4IU20-130 | RFI20130RU |
| | 6IU20-130 | RFI20130SU |
| | 8IU20-130 | RFI20130TU |
| | 10IU20-130 | RFI20130UU |
| | 2IU20-187 | RFI20187RU |
| | 4IU20-187 | RFI20187RU |
| | 6IU20-187 | RFI20187SU |
| | 8IU20-187 | RFI20187TU |
| | 10IU20-187 | RFI20187UU |
| | 2IU25-130 | RFI25130RU |
| | 4IU25-130 | RFI25130RU |
| | 6IU25-130 | RFI25130SU |
| 8IU25-130 | RFI25130TU | |
| 10IU25-130 | RFI25130UU | |
| 2IU25-187 | RFI25187RU | |
| 4IU25-187 | RFI25187RU | |
| 6IU25-187 | RFI25187SU | |
| 8IU25-187 | RFI25187TU | |
| 10IU25-187 | RFI25187UU | |

| | <i>Finite part number</i> | <i>Numatics™ replacement</i> |
|--|---------------------------|------------------------------|
| Coalescers with Plastic Supports (cont'd) | 2IU25-235 | RFI25235RU |
| | 4IU25-235 | RFI25235RU |
| | 6IU25-235 | RFI25235SU |
| | 8IU25-235 | RFI25235TU |
| | 10IU25-235 | RFI25235UU |
| | 2IU25-280 | RFI25280RU |
| | 4IU25-280 | RFI25280RU |
| | 6IU25-280 | RFI25280SU |
| | 8IU25-280 | RFI25280TU |
| | 10IU25-280 | RFI25280UU |

| | <i>Finite part number</i> | <i>Numatics™ replacement</i> |
|-----------------------------|---------------------------|------------------------------|
| Unretained Coalescer | 2H04-013 | RF04013RH |
| | 4H04-013 | RF04013RH |
| | 6H04-013 | RF04013SH |
| | 8H04-013 | RF04013TH |
| | 10H04-013 | RF04013UH |
| | 2H04-023 | RF04023RH |
| | 4H04-023 | RF04023RH |
| | 6H04-023 | RF04023SH |
| | 8H04-023 | RF04023TH |
| | 10H04-23 | RF04023UH |
| | 2H05-011 | RF05011RH |
| | 4H05-011 | RF05011RH |
| | 6H05-011 | RF05011SH |
| | 8H05-011 | RF05011TH |
| | 10H05-011 | RF05011UH |
| | 2H10-025 | RF10025RH |
| | 4H10-025 | RF10025RH |
| | 6H10-025 | RF10025SH |
| | 8H10-025 | RF10025TH |
| | 10H10-025 | RF10025UH |
| | 2H10-050 | RF10050RH |
| | 4H10-050 | RF10050RH |
| | 6H10-050 | RF10050SH |
| | 8H10-050 | RF10050TH |
| | 10H10-050 | RF10050UH |
| | 2H10-070 | RF10070RH |
| | 4H10-070 | RF10070RH |
| | 6H10-070 | RF10070SH |
| | 8H10-070 | RF10070TH |
| | 10H10-070 | RF10070UH |
| | 2H15-060 | RF15060RH |
| | 4H15-060 | RF15060RH |
| | 6H15-060 | RF15060SH |
| | 8H15-060 | RF15060TH |
| | 10H15-060 | RF15060UH |
| | 2H15-095 | RF15095RH |
| | 4H15-095 | RF15095RH |
| | 6H15-095 | RF15095SH |
| | 8H15-095 | RF15095TH |
| | 10H15-095 | RF15095UH |
| | 2H20-187 | RF20187RH |
| | 4H20-187 | RF20187RH |



Replacement Filter Elements

| | <i>Finite part number</i> | <i>Numatics™ replacement</i> |
|--------------------------------------|---------------------------|------------------------------|
| Unretained Coalescer (Cont'd) | 6H20-187 | RF20187SH |
| | 8H20-187 | RF20187TH |
| | 10H20-187 | RF20187UH |

| | <i>Finite part number</i> | <i>Numatics™ replacement</i> |
|--------------------------------------|---------------------------|------------------------------|
| Unretained Particulate Filter | 2G04-013 | RF04013RG |
| | 4G04-013 | RF04013RG |
| | 6G04-013 | RF04013SG |
| | 8G04-013 | RF04013TG |
| | 10G04-013 | RF04013UG |
| | 2G04-023 | RF04023RG |
| | 4G04-023 | RF04023RG |
| | 6G04-023 | RF04023SG |
| | 8G04-023 | RF04023TG |
| | 10G04-023 | RF04023UG |
| | 2G05-011 | RF05011RG |
| | 4G05-011 | RF05011RG |
| | 6G05-011 | RF05011SG |
| | 8G05-011 | RF05011TG |
| | 10G05-011 | RF05011UG |
| | 2G10-025 | RF10025RG |
| | 4G10-025 | RF10025RG |
| | 6G10-025 | RF10025SG |
| | 8G10-025 | RF10025TG |
| | 10G10-025 | RF10025UG |
| | 2G10-050 | RF10050RG |
| | 4G10-050 | RF10050RG |
| | 6G10-050 | RF10050SG |
| | 8G10-050 | RF10050TG |
| | 10G10-050 | RF10050UG |
| | 2G10-070 | RF10070RG |
| | 4G10-070 | RF10070RG |
| | 6G10-070 | RF10070SG |
| | 8G10-070 | RF10070TG |
| | 10G10-070 | RF10070UG |
| | 2G15-060 | RF15060RG |
| | 4G15-060 | RF15060RG |
| | 6G15-060 | RF15060SG |
| 8G15-060 | RF15060TG | |
| 10G15-060 | RF15060UG | |
| 2G15-095 | RF15095RG | |
| 4G15-095 | RF15095RG | |
| 6G15-095 | RF15095SG | |
| 8G15-095 | RF15095TG | |
| 10G15-095 | RF15095UG | |
| 2G20-187 | RF20187RG | |
| 4G20-187 | RF20187RG | |
| 6G20-187 | RF20187SG | |
| 8G20-187 | RF20187TG | |
| 10G20-187 | RF20187UG | |

| | <i>Finite part number</i> | <i>Numatics™ replacement</i> |
|----------------------|---------------------------|------------------------------|
| Inline Filter | IDN-2G | PLR-T |
| | IDN-4G | PLR-T |
| | IDN-6G | PLS-T |
| | IDN-8G | PLT-T |
| | IDN-10G | PLU-T |
| | SDN-O | PLS-TD |

Flair™

| | <i>Flair part number</i> | <i>Numatics™ replacement</i> |
|------------------|--------------------------|------------------------------|
| Prefilter | PPFK1A03AF | RPPFK1A03AF |

| | | |
|------------------|------------|-------------|
| Coalescer | PPFK1A02SU | RPPFK1A02SU |
| | PPFK1A03SU | RPPFK1A03SU |
| | PPFK2A05SU | RPPFK2A05SU |

Gardner Denver™

| | <i>G.D. part number</i> | <i>Numatics™ replacement</i> |
|------------------|-------------------------|------------------------------|
| Prefilter | GDP 02/05 | RGDP0205P |
| | GDP 03/05 | RGDP0305P |
| | GDP 04/20 | RGDP0420P |
| | GDP 05/20 | RGDP0520P |
| | GDP 05/25 | RGDP0525P |
| | GDP 07/25 | RGDP0725P |
| | GDP 07/30 | RGDP0730P |
| | GDP 10/30 | RGDP1030P |
| | GDP 15/30 | RGDP1530P |
| | GDP 20/30 | RGDP2030P |
| | GDP 30/30 | RGDP3030P |
| | GDP 30/50 | RGDP3050P |

| | | |
|--------------------|-----------|------------|
| Fine Filter | GDF 02/05 | RGDF0205U |
| | GDF 03/05 | RGDF0305U |
| | GDF 04/10 | RGDF0410U |
| | GDF 04/20 | RGDF0420U |
| | GDF 05/20 | RGDF0520U |
| | GDF 05/25 | RGDF0525U |
| | GDF 07/25 | RGDF0725U |
| | GDF 07/30 | RGDF0730U |
| | GDF 10/30 | RGDF1030U |
| | GDF 15/30 | RGDF1530U |
| | GDF 20/30 | RGDF2030U |
| | GDF 30/30 | RGDF3030U |
| | GDF 30/50 | RGDF3050UP |

| | | |
|---------------------|-----------|-----------|
| Micro Filter | GDM 02/05 | RGDM0205S |
| | GDM 03/05 | RGDM0305S |
| | GDM 04/10 | RGDM0410S |
| | GDM 04/20 | RGDM0420S |
| | GDM 05/20 | RGDM0520S |
| | GDM 05/25 | RGDM0525S |
| | GDM 07/25 | RGDM0725S |
| | GDM 07/30 | RGDM0730S |



Replacement Filter Elements

| | <i>G.D. part number</i> | <i>Numatics™ replacement</i> |
|------------------------------|-------------------------|------------------------------|
| Micro Filter (Cont'd) | GDM 10/30 | RGDM1030S |
| | GDM 15/30 | RGDM1530S |
| | GDM 20/30 | RGDM2030S |
| | GDM 30/30 | RGDM3030S |
| | GDM 30/50 | RGDM3050SP |

| | <i>G.D. part number</i> | <i>Numatics™ replacement</i> |
|-------------------------|-------------------------|------------------------------|
| Sub Micro Filter | GDU 02/05 | RGDU0205R |
| | GDU 03/05 | RGDU0305R |
| | GDU 04/10 | RGDU0410R |
| | GDU 04/20 | RGDU0420R |
| | GDU 05/20 | RGDU0520R |
| | GDU 05/25 | RGDU0525R |
| | GDU 07/25 | RGDU0725R |
| | GDU 07/30 | RGDU0730R |
| | GDU 10/30 | RGDU1030R |
| | GDU 15/30 | RGDU1530R |
| | GDU 20/30 | RGDU2030R |
| | GDU 30/30 | RGDU3030R |
| | GDU 30/50 | RGDU3050RP |

| | <i>G.D. part number</i> | <i>Numatics™ replacement</i> |
|-----------------|-------------------------|------------------------------|
| Adsorber | GDK 02/05 | RGDK0205A |
| | GDK 03/05 | RGDK0305A |
| | GDK 04/10 | RGDK0410A |
| | GDK 04/20 | RGDK0420A |
| | GDK 05/20 | RGDK0520A |
| | GDK 05/25 | RGDK0525A |
| | GDK 07/25 | RGDK0725A |
| | GDK 07/30 | RGDK0730A |
| | GDK 10/30 | RGDK1030A |
| | GDK 15/30 | RGDK1530A |
| | GDK 20/30 | RGDK2030A |
| | GDK 30/30 | RGDK3030A |
| | GDK 30/50 | RGDK3050A |

| Gast™ | | |
|------------------|-------------------------|------------------------------|
| | <i>Gast part number</i> | <i>Numatics™ replacement</i> |
| Coalescer | AC393 | RG393U |

| General Pneumatics™ | | |
|----------------------------|-------------------------------|------------------------------|
| | <i>Gen. Pneu. part number</i> | <i>Numatics™ replacement</i> |
| AfterFilter | 1238970 | RGP1238970P |
| | GPC601AF | RGPGPC601P |
| | GPC1201AF | RGPGPC1201P |
| | GPE 95-35-AF | RGPGPE9535P |
| | GPE 95-60-AF | RGPGPE9560P |
| | GPE 95-150-AF | RGPGPE95150P |
| | GPE 95-400-AF | RGPGPE95400P |
| | GPE 95-600-AF | RGPGPE95600P |
| | GPE 95-800-AF | RGPGPE95800P |
| | GPE 95-1000-AF | RGPGPE951000P |
| | GPE 95-1200-AF | RGPGPE951200P |

| | <i>Gen. Pneu. part number</i> | <i>Numatics™ replacement</i> |
|------------------|-------------------------------|------------------------------|
| Coalescer | 1238969 | RGP1238969SP |
| | GPC601PF | RGPGPC601SP |
| | GPC1201PF | RGPGPC1201SP |
| | GPE 95-60-PF | RGPGPE9560S |
| | GPE 95-275-PF | RGPGPE95275S |
| | GPE 95-400-PF | RGPGPE95400S |
| | GPE 95-600-PF | RGPGPE95600S |
| | GPE 95-800-PF | RGPGPE95800S |
| | GPE 95-1000-PF | RGPGPE951000S |
| | GPE 95-1200-PF | RGPGPE951200S |

| | <i>Gen. Pneu. part number</i> | <i>Numatics™ replacement</i> |
|-----------------|-------------------------------|------------------------------|
| Adsorber | GPC1201CF | RGPGPC1201A |
| | GPE 95-35-CF | RGPGPE9535A |
| | GPE 95-60-CF | RGPGPE9560A |
| | GPE 95-150-CF | RGPGPE95150A |
| | GPE 95-400-CF | RGPGPE95400A |
| | GPE 95-600-CF | RGPGPE95600A |
| | GPE 95-800-CF | RGPGPE95800A |
| | GPE 95-1000-CF | RGPGPE951000A |
| | GPE 95-1200-CF | RGPGPE951200A |

| Graham White™ | | |
|----------------------|-------------------------|------------------------------|
| | <i>G.W. part number</i> | <i>Numatics™ replacement</i> |
| | CEF28 | RGWCEF28 |

| Great Lakes Air™ | | |
|-------------------------|---------------------------|------------------------------|
| | <i>G.L.A. part number</i> | <i>Numatics™ replacement</i> |
| Particulate | EGP-25 | RGEGP25P |
| | EGP-30 | RGEGP30P |
| | EGP-40 | RGEGP40P |
| | EGP-65 | RGEGP65P |
| | EGP-80 | RGEGP80P |
| | EGP-130 | RGEGP130P |
| | EGP-170 | RGEGP170P |
| | EGP-230 | RGEGP230P |
| | EGP-370 | RGEGP370P |
| | EGP-415 | RGEGP415P |
| | EGP-420 | RGEGP420P |
| | EGP-540 | RGEGP540P |
| | EGP-600 | RGEGP600P |
| | EGP-625 | RGEGP625P |
| | EGP-700 | RGEGP700P |
| | EGP-750 | RGEGP750P |
| | EGP-920 | RGEGP920P |
| | EGP-1035 | RGEGP1035P |
| | EGP-1250 | RGEGP1250P |
| | EGP-1650 | RGEGP1650P |
| EGP-2500 | RGEGP2500P | |
| EGP-3300 | RGEGP3300P | |
| EGP-5000 | RGEGP5000P | |
| EGP-7500 | RGEGP7500P | |



| | G.L.A. part number | Numatics™ replacement |
|-----------------------------|--------------------|-----------------------|
| Particulate (cont'd) | EGP-10000 | RGEGP10000P |
| | EGP-17500 | RGEGP17500P |
| | EGP-27000 | RGEGP27000P |
| | EGP-37350 | RGEGP37350P |

| | | |
|------------------|-------------|-------------|
| Coalescer | EGC-15 | RGEGC15S |
| | EGC-20 | RGEGC20S |
| | EGC-25 | RGEGC25S |
| | EGC-40 | RGEGC40S |
| | EGC-50 | RGEGC50S |
| | EGC-80 | RGEGC80S |
| | EGC-100 | RGEGC100S |
| | EGC-140 | RGEGC140S |
| | EGC-220 | RGEGC220S |
| | EGC-255 | RGEGC255S |
| | EGC-250 | RGEGC250S |
| | EGC-325 | RGEGC325S |
| | EGC-350 | RGEGC350S |
| | EGC-375 | RGEGC375S |
| | EGC-420 | RGEGC420S |
| | EGC-450 | RGEGC450S |
| | EGC-550 | RGEGC550S |
| | EGC-625 | RGEGC625S |
| | EGC-750 | RGEGC750S |
| | EGC-800 | RGEGC800S |
| | EGC-1000 | RGEGC1000S |
| | EGC-1500 | RGEGC1500S |
| | EGC-2000 | RGEGC2000S |
| | EGC-3000 | RGEGC3000S |
| | EGC-4500 | RGEGC4500S |
| | EGC-6000 | RGEGC6000S |
| | EGC-10500 | RGEGC10500S |
| | EGC-16500 | RGEGC16500S |
| EGC-22500 | RGEGC22500S | |

| | | |
|-------------------------|---------|-----------|
| Activated Carbon | EGA-15 | RGEGA15A |
| | EGA-20 | RGEGA20A |
| | EGA-25 | RGEGA25A |
| | EGA-40 | RGEGA40A |
| | EGA-50 | RGEGA50A |
| | EGA-80 | RGEGA80A |
| | EGA-100 | RGEGA100A |
| | EGA-140 | RGEGA140A |
| | EGA-220 | RGEGA220A |
| | EGA-255 | RGEGA255 |
| | EGA-250 | RGEGA250 |
| | EGA-325 | RGEGA325A |
| | EGA-350 | RGEGA350A |
| | EGA-375 | RGEGA375A |
| | EGA-420 | RGEGA420A |
| | EGA-450 | RGEGA450A |
| | EGA-550 | RGEGA550A |
| | EGA-625 | RGEGA625A |

| | | |
|----------------------------------|-----------|-------------|
| Activated Carbon (cont'd) | EGA-750 | RGEGA750A |
| | EGA-800 | RGEGA800A |
| | EGA-1000 | RGEGA1000A |
| | EGA-1500 | RGEGA1500A |
| | EGA-2000 | RGEGA2000A |
| | EGA-3000 | RGEGA3000A |
| | EGA-4500 | RGEGA4500A |
| | EGA-6000 | RGEGA6000A |
| | EGA-10500 | RGEGA10500A |
| | EGA-16500 | RGEGA16500A |
| | EGA-22500 | RGEGA22500A |

Hankison™

| | Hankison part number | Numatics™ replacement |
|------------------|----------------------|-----------------------|
| Separator | 07.4441-01 | RH4101 |
| | 07.4443-01 | RH4301 |
| | 074444-1 | RH4401 |
| | 07-4445-01 | RH4501 |
| | 07-4446-01 | RH4601 |
| | 07.4447-01 | RH4701 |
| | 0734-1 | RH7341 |
| | 0734-3 | RH7343 |
| | 0734-4 | RH7344 |
| | 0734-7 | RH7347 |
| | S9-PV | RHS9PV |
| | E9-12-02 | RH4101 |
| | E9-20-06 | RH4301 |
| | E9-PV | RH4701 |
| | E9-PVS | RHE9PVS |
| | E11-12 | RHE1112 |
| | E11-16 | RHE1116 |
| | E11-20 | RHE1120 |
| | E11-24 | RHE1124 |
| | E11-40 | RHE1140 |

| | | |
|------------------|----------|---------|
| Prefilter | 0731-3 | RH7313P |
| | 0731-4 | RH7314P |
| | 0731-5 | RH7315P |
| | 0731-6 | RH7316P |
| | 0731-7 | RH7317P |
| | 0731-8 | RH7318P |
| | 0731-9 | RH7319P |
| | E6-16 | RHE616U |
| | E6-20 | RHE620U |
| | E6-24 | RHE624U |
| | E6-28 | RHE628U |
| | E6-32 | RHE632U |
| | E6-36 | RHE636U |
| | E6-40 | RHE640U |
| | E6-48 | RHE648U |
| | E6-54 | RHE654U |
| | E6-PV | RHE6PVU |
| | E7-16-03 | RH7313P |



Replacement Filter Elements

| | Hankison part number | Numatics™ replacement |
|------------------|----------------------|-----------------------|
| Prefilter | E7-20-05 | RH7314P |
| | E7-24-08 | RH7315P |
| | E7-32-10 | RH7316P |
| | E7-36-13 | RH7317P |
| | E7-54 | RH7318P |
| | E7-PV | RH7319P |
| | E9-12 | RHE912P |
| | E9-16 | RHE916P |
| | E9-20 | RHE920P |
| | E9-24 | RHE924P |
| | E9-28 | RHE928P |
| | E9-32 | RHE932P |
| | E9-36 | RHE936P |
| | E9-40 | RHE940P |
| | E9-44 | RHE944P |
| | E9-48 | RHE948P |

| | Hankison part number | Numatics™ replacement |
|------------------|----------------------|-----------------------|
| Coalescer | 0713-2 | RH7132S |
| | 0713-3 | RH7133S |
| | 0713-4 | RH7134S |
| | 0713-5 | RH7135S |
| | 0713-6 | RH7136S |
| | 0713-7 | RH7137S |
| | 0713-8 | RH7138S |
| | 0713-9 | RH7139S |
| | 0713-11-__ | RH71311S |
| | 0713-12-__ | RH71312S |
| | E7-12 | RHE712U |
| | E7-16 | RHE716U |
| | E7-20 | RHE720U |
| | E7-24 | RHE724U |
| | E7-28 | RHE728U |
| | E7-32 | RHE732U |
| | E7-36 | RHE736U |
| | E7-40 | RHE740U |
| | E7-44 | RHE744U |
| | E7-48 | RHE748U |
| | E5-12 | RHE512S |
| | E5-16 | RHE516S |
| | E5-16-03 | RH7132S |
| | E5-20 | RHE520S |
| | E5-20-05 | RH7133S |
| | E5-24 | RHE524S |
| | E5-24-08 | RH7134S |
| | E5-28 | RHE528S |
| | E5-32 | RHE532S |
| | E5-32-10 | RH7135S |
| | E5-36 | RHE536S |
| | E5-36-13 | RH7136S |
| | E5-40 | RHE540S |
| | E5-40-14 | RH7137S |
| E5-44 | RHE544S | |
| E5-48 | RHE548S | |

The underscore(_) in the element number indicates the number of elements per housing.

| | Hankison part number | Numatics™ replacement |
|---------------------------|----------------------|-----------------------|
| Coalescer (cont'd) | E5-54 | RH71312S |
| | E5-PV | RH71311S |
| | E3-12 | RHE312R |
| | E3-16 | RHE316R |
| | E3-16-03 | RH7132R |
| | E3-20-05 | RH7133R |
| | E3-24 | RHE324R |
| | E3-24-08 | RH7134R |
| | E3-28 | RHE328R |
| | E3-32 | RHE332R |
| | E3-32-10 | RH7135R |
| | E3-36 | RHE336R |
| | E3-36-13 | RH7136R |
| | E3-40 | RHE340R |
| | E3-40-14 | RH7137R |
| | E3-44 | RHE344R |
| | E3-48 | RHE348R |
| E3-54 | RH71312R | |
| E3-PV | RH71311R | |

| | Hankison part number | Numatics™ replacement |
|-----------------|----------------------|-----------------------|
| Adsorber | 0715-2 | RH7152A |
| | 0715-3 | RH7153A |
| | 0715-4 | RH7154A |
| | 0715-5 | RH7155A |
| | 0715-6 | RH7156A |
| | 0715-7 | RH7157A |
| | 0715-8 | RH7158A |
| | 0715-9 | RH7159A |
| | 0715-11-__ | RH71511A |
| | 0715-12-__ | RH71512A |
| | E1-12 | RHE112A |
| | E1-16 | RHE116A |
| | E1-16-03 | RH7152A |
| | E1-20 | RHE120A |
| | E1-20-05 | RH7153A |
| | E1-24 | RHE124A |
| | E1-24-08 | RH7154A |
| | E1-28 | RHE128A |
| | E1-32 | RHE132A |
| | E1-32-10 | RH7155A |
| | E1-36 | RHE136A |
| | E1-36-13 | RH7156A |
| | E1-40 | RHE140A |
| | E1-40-14 | RH7157A |
| | E1-44 | RHE144A |
| | E1-48 | RHE148A |
| | E1-54 | RH71512A |
| E1-PV | RH71511A | |

The underscore(_) in the element number indicates the number of elements per housing.



Headline™

| | Headline part number | Numatics™ replacement |
|---------------------------|----------------------|-----------------------|
| Direct Replacement | 12-32-50C | RH1232S |
| | 12-32-50K | RH1232S |
| | 12-32-60C | RH1232T |
| | 12-32-60K | RH1232T |
| | 12-32-70C | RH1232U |
| | 12-32-70K | RH1232U |
| | 12-32-SA | RH1232RIS |
| | 12-32-371H | RH1232H |
| | 12-57-50C | RH1257S |
| | 12-57-50K | RH1257S |
| | 12-57-60C | RH1257T |
| | 12-57-60K | RH1257T |
| | 12-57-70C | RH1257U |
| | 12-57-70K | RH1257U |
| | 12-57-SA | RH1257RIS |
| | 12-57-371H | RH1257H |
| | 25-51-50C | RH2551S |
| | 25-51-50K | RH2551S |
| | 25-51-60C | RH2551T |
| | 25-51-60K | RH2551T |
| | 25-51-70C | RH2551U |
| | 25-51-70K | RH2551U |
| | 25-51-SA | RH2551RIS |
| | 25-51-371H | RH2551H |
| | 25-64-50C | RH2564S |
| | 25-64-50K | RH2564S |
| | 25-64-60C | RH2564T |
| 25-64-60K | RH2564T | |
| 25-64-70C | RH2564U | |
| 25-64-70K | RH2564U | |
| 25-64-SA | RH2564RIS | |
| 25-64-371H | RH2564H | |
| 25-127-50C | RH25127S | |
| 25-127-50K | RH25127S | |
| 25-127-60C | RH25127T | |
| 25-127-60K | RH25127T | |
| 25-127-70C | RH25127U | |
| 25-127-70K | RH25127U | |
| 25-127-SA | RH25127RIS | |
| 25-127-371H | RH25127H | |
| 25-178-50C | RH25178S | |
| 25-178-50K | RH25178S | |
| 25-178-60C | RH25178T | |
| 25-178-60K | RH25178T | |
| 25-178-70C | RH25178U | |
| 25-178-70K | RH25178U | |

| | Headline part number | Numatics™ replacement |
|------------------------------------|----------------------|-----------------------|
| Direct Replacement (Cont'd) | 25-178-SA | RH25178RIS |
| | 25-178-371H | RH25178H |
| 38-152-50C | RH38152S | |
| 38-152-50K | RH38152S | |
| 38-152-60C | RH38152T | |
| 38-152-60K | RH38152T | |
| 38-152-70C | RH38152U | |
| 38-152-70K | RH38152U | |
| 38-152-SA | RH38152RIS | |
| 38-152-371H | RH38152H | |
| 51-89-50C | RH5189S | |
| 51-89-50K | RH5189S | |
| 51-89-60C | RH5189T | |
| 51-89-60K | RH5189T | |
| 51-89-70C | RH5189U | |
| 51-89-70K | RH5189U | |
| 51-89-SA | RH5189RIS | |
| 51-89-371H | RH5189H | |
| 51-230-50C | RH51230S | |
| 51-230-50K | RH51230S | |
| 51-230-60C | RH51230T | |
| 51-230-60K | RH51230T | |
| 51-230-70C | RH51230U | |
| 51-230-70K | RH51230U | |
| 51-230-SA | RH51230RIS | |
| 51-230-371H | RH51230H | |
| 51-476-50C | RH51476S | |
| 51-476-50K | RH51476S | |
| 51-476-60C | RH51476T | |
| 51-476-60K | RH51476T | |
| 51-476-70C | RH51476U | |
| 51-476-70K | RH51476U | |
| 51-476-SA | RH51476RIS | |
| 51-476-371H | RH51476H | |

| | | |
|------------------------|-----------|----------|
| Carbon Adsorber | 25-64-CC | RH2564A |
| | 25-178-CC | RH25178A |
| | 38-152-CC | RH38152A |
| | 51-230-CC | RH51230A |
| | 51-476-CC | RH51476A |

Henderson™

| | Henderson part number | Numatics™ replacement |
|------------------------------------|-----------------------|-----------------------|
| Dryer Prefilter (Coalescer) | 16D33B | RH33S |
| | 16D50B | RH50S |
| | 16D100 | RH100S |
| | 16D150 | RH150S |
| | 0812-1A | RH8121S |



Replacement Filter Elements

| | <i>Henderson part number</i> | <i>Numatics™ replacement</i> |
|--|------------------------------|------------------------------|
| Dryer Afterfilter (Particulate) | SB12 | RHSB12P |
| | 0812-1B | RH8121P |
| | F350 | RHF350P |

| | | |
|-------------------------------|----------|----------|
| High Temp. Afterfilter | F-350 HT | RHF350UI |
|-------------------------------|----------|----------|

Hiross™

| | <i>Hiross part number</i> | <i>Numatics™ replacement</i> |
|--------------------|---------------------------|------------------------------|
| Particulate | H060Q | RH060P |
| | Q-004 | RHQ004P |
| | Q-024 | RHQ024P |
| | Q-060 | RHQ060P |
| | Q-090 | RHQ090P |
| | Q-120 | RHQ120P |
| | Q-150 | RHQ150P |

| | | |
|------------------|-------|---------|
| Coalescer | H060P | RH060U |
| | H060S | RH060S |
| | P-004 | RHP004U |
| | P-024 | RHP024U |
| | P-060 | RHP060U |
| | P-090 | RHP090U |
| | P-120 | RHP120U |
| | P-150 | RHP150U |
| | S-004 | RHS004S |
| | S-015 | RHS015S |
| | S-060 | RHS060S |
| | S-090 | RHS090S |
| | S-120 | RHS120S |
| | S-150 | RHS150S |

| | | |
|---------------------------|-------|---------|
| Activated Charcoal | C-004 | RHC004A |
| | C-024 | RHC024A |
| | C-060 | RHC060A |
| | H060C | RH060A |

Ingersoll-Rand™

| | <i>I.Rand part number</i> | <i>Numatics™ replacement</i> |
|--------------------|---------------------------|------------------------------|
| Particulate | 39474879 | RIR39474879 |
| | 39474895 | RIR39474895 |

| | | |
|------------------|----------|-------------|
| Coalescer | 1500 | RIR1500T |
| | 36776284 | RIR36776284 |
| | 36776292 | RIR36776292 |
| | 39241179 | RIR39241179 |
| | 39474788 | RIR39474788 |
| | 39474812 | RIR39474812 |
| | 39474895 | RIR39474895 |

| | <i>I.Rand part number</i> | <i>Numatics™ replacement</i> |
|-------------------------|---------------------------|------------------------------|
| Coarse Coalescer | E4AO | RIE4U |
| | E8AO | RIE8U |
| | E15AO | RIE15U |
| | E24AO | RIE24U |
| | E50AO | RIE50U |
| | E125AO | RIE125U |
| | E180AO | RIE180U |
| | E300AO | RIE300U |

| | | |
|----------------------------------|--------|---------|
| High Efficiency Coalescer | E4AA | RIE4S |
| | E8AA | RIE8S |
| | E15AA | RIE15S |
| | E24AA | RIE24S |
| | E50AA | RIE50S |
| | E125AA | RIE125S |
| | E180AA | RIE180S |
| | E300AA | RIE300S |

| | | |
|-------------------------|--------|---------|
| Activated Carbon | E4AC | RIE4S |
| | E8AC | RIE8S |
| | E15AC | RIE15S |
| | E24AC | RIE24S |
| | E50AC | RIE50S |
| | E125AC | RIE125S |
| | E180AC | RIE180S |
| | E300AC | RIE300S |

IPAC™

| | <i>IPAC part number</i> | <i>Numatics™ replacement</i> |
|--------------------|-------------------------|------------------------------|
| Particulate | IQ004 | RIQ004P |
| | IQ024 | RIQ024P |
| | IQ060 | RIQ060P |
| | IQ090 | RIQ090P |
| | IQ120 | RIQ120P |
| | IQ150 | RIQ150P |

| | | |
|------------------|---------|---------|
| Coalescer | EK0127M | RI0127U |
| | EK0127P | RI0127S |
| | EK0127A | RI0127R |
| | EK0675A | RI0675R |
| | EK0675M | RI0675U |
| | EK0675P | RI0675S |
| | IP004 | RIP004U |
| | IP015 | RIP015U |
| | IP024 | RIP024U |
| | IP060 | RIP060U |
| | IP090 | RIP090U |
| | IP120 | RIP120U |
| | IP150 | RIP150U |
| | IS004 | RIS004S |
| | IS024 | RIS024S |
| | IS060 | RIS060S |
| | IS090 | RIS090S |
| | IS120 | RIS120S |
| | IS150 | RIS150S |

Para Información de contacto de su oficina mas cercana visite www.mro.com.mx



Replacement Filter Elements

| | <i>IPAC part number</i> | <i>Numatics™ replacement</i> |
|---------------------------|-------------------------|------------------------------|
| Activated Charcoal | EK0127C | RI0127A |
| | EK0675C | RI0675A |
| | IC004 | RIC004A |
| | IC015 | RIC015A |
| | IC024 | RIC024A |
| | IC060 | RIC060A |

Kaeser™

| | <i>Kaeser part number</i> | <i>Numatics™ replacement</i> |
|-------------------|---------------------------|------------------------------|
| Separators | USFSS-PV | RKUSFSSPV |
| | PF-PV | RKPFPV |
| | FSS-100 | RKFSS100 |
| | 4441 | RK4441 |
| | 4443 | RK4443 |
| | 4444 | RK4444 |
| | 4445 | RK4445 |
| | 4446 | RK4446 |
| | 4447 | RK4447 |
| | C-118 | RKC118 |
| | C-155/C-1110 | RKC155 |
| | C-1165 | RKC1165 |
| | C-1400/C-1660 | RKC1400 |

| | | |
|------------------|--------|----------|
| Coalescer | C-318 | RKC318S |
| | C-335 | RKC335S |
| | C-355 | RKC355S |
| | C-3110 | RKC3110S |
| | C-3220 | RKC3220S |
| | C-3330 | RKC3330S |
| | C-3350 | RKC3350S |
| | C-3275 | RKC3275S |
| | KPF20 | RKPF20U |
| | KPF35 | RKPF35U |
| | KPF60 | RKPF60U |
| | KPF100 | RKPF100U |
| | KPF170 | RKPF170U |
| | KPF250 | RKPF250U |
| | KPF375 | RKPF375U |
| | KPF485 | RKPF485U |
| | KPF625 | RKPF625U |
| | KPF780 | RKPF780U |
| | KOR20 | RKOR20S |
| | KOR35 | RKOR35S |
| | KOR60 | RKOR60S |
| | KOR100 | RKOR100S |
| | KOR170 | RKOR170S |
| | KOR250 | RKOR250S |
| | KOR375 | RKOR375S |
| | KOR485 | RKOR485S |
| | KOR625 | RKOR625S |
| | KOR780 | RKOR780S |

| | <i>Kaeser part number</i> | <i>Numatics™ replacement</i> |
|---------------------------|---------------------------|------------------------------|
| Coalescer (Cont'd) | KOX20 | RKOX20R |
| | KOX35 | RKOX35R |
| | KOX60 | RKOX60R |
| | KOX100 | RKOX100R |
| | KOX170 | RKOX170R |
| | KOX250 | RKOX250R |
| | KOX375 | RKOX375R |
| | KOX485 | RKOX485R |
| | KOX625 | RKOX625R |
| | KOX780 | RKOX780R |
| | USOR-PV | RKUSORPV |

| | | |
|--------------------|----------|-----------|
| Particulate | USPF-500 | RKUSPF500 |
| | C-220 | RKC220P |
| | C-240 | RKC240P |
| | C-2110 | RKC2110P |
| | C-2220 | RKC2220P |
| | C-2330 | RKC2330P |
| | C-2400 | RKC2400P |
| | C-2850 | RKC2850P |
| | FSE20 | RKFSE20P |
| | FSE35 | RKFSE35P |
| | FSE60 | RKFSE60P |
| | FSE100 | RKFSE100P |
| | FSE170 | RKFSE170P |
| | FSE250 | RKFSE250P |
| | FSE375 | RKFSE375P |
| | FSE485 | RKFSE485P |
| | FSE625 | RKFSE625P |
| | FSE780 | RKFSE780P |

| | | |
|-----------------|---------|----------|
| Adsorber | C-418 | RKC418A |
| | C-435 | RKC435A |
| | C-455 | RKC455A |
| | C-4110 | RKC4110A |
| | C-4220 | RKC4220A |
| | C-4330 | RKC4330A |
| | C-4350 | RKC4350A |
| | C-4275 | RKC4275A |
| | KVF20 | RKVF20A |
| | KVF35 | RKVF35A |
| | KVF60 | RKVF60A |
| | KVF100 | RKVF100A |
| | KVF170 | RKVF170A |
| | KVF250 | RKVF250A |
| | KVF375 | RKVF375A |
| | KVF485 | RKVF485A |
| | KVF625 | RKVF625A |
| | KVF780 | RKVF780A |
| | USVA-PV | RKUSVAPV |



Replacement Filter Elements

Kemp™

| | <i>Kemp part number</i> | <i>Numatics™ replacement</i> |
|------------------|-------------------------|------------------------------|
| Coalescer | 63986 | RK63986 |
| | 63988 | RK63988 |
| | 83921 | RK83921 |

Leybold Hereaus™

| | <i>Leybold H. part number</i> | <i>Numatics™ replacement</i> |
|--------------------|-------------------------------|------------------------------|
| Particulate | 390-26-121 | RL39026121 |
| Coalescer | 710-46-343 | RL71046343 |
| | 710-64-763 | RL71064763 |
| | 710-64-773 | RL71064773 |
| | 712-32-023 | RL71232023 |
| | 714-12-870 | RL71412870 |

Master Pneumatic™

| | <i>Master P. part number</i> | <i>Numatics™ replacement</i> |
|--------------------|------------------------------|------------------------------|
| Particulate | 10303KA | RMP10303 |
| | 1093KA3 | RMP1093 |
| | K106-33 | RMP10633 |
| Coalescer | A103-137 | RMA103137S |
| | A106-24 | RMA10624S |

Master Power™

| | <i>Master P. part number</i> | <i>Numatics™ replacement</i> |
|--------------------|------------------------------|------------------------------|
| Particulate | 2112 | RMP2112P |

Mikropor™

| | <i>Mikropor part number</i> | <i>Numatics™ replacement</i> |
|--------------------|-----------------------------|------------------------------|
| Particulate | M25P | RMM25P |
| | M50P | RMM50P |
| | M100P | RMM100P |
| | M150P | RMM150P |
| | M200P | RMM200P |
| | M250P | RMM250P |
| | M300P | RMM300P |
| | M500P | RMM500P |
| | M600P | RMM600P |
| | M851P | RMM851P |
| | M1210P | RMM1210P |
| | M1510P | RMM1510P |
| | M1810P | RMM1810P |
| Coalescer | M25X | RMM25U |
| | M50X | RMM50U |
| | M100X | RMM100U |
| | M150X | RMM150U |
| | M200X | RMM200U |
| | M250X | RMM250U |
| | M300X | RMM300U |
| M500X | RMM500U | |

Mikropor part number *Numatics replacement*

Coalescer (Cont'd)

| | |
|--------|----------|
| M600X | RMM600U |
| M851X | RMM851U |
| M1210X | RMM1210U |
| M1510X | RMM1510U |
| M1810X | RMM1810U |
| M25Y | RMM25S |
| M50Y | RMM50S |
| M100Y | RMM100S |
| M150Y | RMM150S |
| M200Y | RMM200S |
| M250Y | RMM250S |
| M300Y | RMM300S |
| M500Y | RMM500S |
| M600Y | RMM600S |
| M851Y | RMM851S |
| M1210Y | RMM1210S |
| M1510Y | RMM1510S |
| M1810Y | RMM1810S |

Adsorber

| | |
|--------|----------|
| M25A | RMM25A |
| M50A | RMM50A |
| M100A | RMM100A |
| M150A | RMM150A |
| M200A | RMM200A |
| M250A | RMM250A |
| M300A | RMM300A |
| M500A | RMM500A |
| M600A | RMM600A |
| M851A | RMM851A |
| M1210A | RMM1210A |
| M1510A | RMM1510A |
| M1810A | RMM1810A |

Motivair™

| | <i>Motivair part number</i> | <i>Numatics™ replacement</i> | |
|--------------------|-----------------------------|------------------------------|----------|
| Particulate | 06050P | RM06050P | |
| | 07050P | RM07050P | |
| | 14050P | RM14050P | |
| | 12075P | RM12075P | |
| | 22075P | RM22075P | |
| | 32075P | RM32075P | |
| | 50075P | RM50075P | |
| | 51090P | RM51090P | |
| | 76090P | RM76090P | |
| | 75140P | RM75140P | |
| | Coalescer | 06050M | RM06050T |
| | | 06050S | RM06050S |
| 07050M | | RM07050T | |
| 07050S | | RM07050S | |
| 14050M | | RM14050T | |
| 14050S | | RM14050S | |
| 12075M | RM12075T | | |



Replacement Filter Elements

| | Motivair part number | Numatics™ replacement |
|---------------------------|----------------------|-----------------------|
| Coalescer (cont'd) | 12075S | RM12075S |
| | 22075M | RM22075T |
| | 22075S | RM22075S |
| | 32075M | RM32075T |
| | 32075S | RM32075S |
| | 50075M | RM50075T |
| | 50075S | RM50075S |
| | 51090M | RM51090T |
| | 51090S | RM51090S |
| | 76090M | RM76090T |
| | 76090S | RM76090S |
| | 75140M | RM75140T |
| | 75140S | RM75140S |

| | Motivair part number | Numatics™ replacement |
|-----------------|----------------------|-----------------------|
| Adsorber | 06050A | RM06050A |
| | 07050A | RM07050A |
| | 14050A | RM14050A |
| | 12075A | RM12075A |
| | 22075A | RM22075A |
| | 32075A | RM32075A |
| | 50075A | RM50075A |
| | 51090A | RM51090A |
| | 76090A | RM76090A |
| | 75140A | RM75140A |

Newcastle™

| | Newcastle part number | Numatics™ replacement |
|------------------|-----------------------|-----------------------|
| Coalescer | S160 | RN160R |

Norgren™

| | Norgren part number | Numatics™ replacement |
|--------------------|---------------------|-----------------------|
| Particulate | 2992-18 | RN2992P |
| | 2992-20 | RN2992P |
| | 3161-16 | RN3161P |
| | 3161-18 | RN3161P |
| | 3652-09 | RN3652P |
| | 3652-11 | RN3652P |
| | 3792-24 | RN379224P |
| | 4338-04 | RN4338P |
| | 4338-05 | RN4338P |
| | 4438-01 | RN4438P |
| | 4438-04 | RN4438P |
| | 5311-01 | RN5311P |
| | 5311-02 | RN5311P |
| | 5311-03 | RN5311P |
| | 5726-01 | RN5726U |
| | 5882-11 | RN5882P |
| | 5882-13 | RN5882P |
| | 5925-03 | RN5925U |

| | Norgren part number | Numatics™ replacement |
|------------------|---------------------|-----------------------|
| Coalescer | 3203-01 | RN32031S |
| | 3203-04 | RN32034S |
| | 3257-24 | RN325724S |
| | 4344-01 | RN434401S |
| | 4344-02 | RN434402S |
| | 4444-01 | RN444401S |
| | 5349-05 | RN534905S |
| | 5350-03 | RN53503S |
| | 5350-04 | RN53504S |
| | 5350-13 | RN53513S |
| | 5350-14 | RN53514S |
| | 5350-98 | RN535098S |
| | 5351-03 | RN535103S |
| | 5925-09 | RN592509S |
| | 665-75 | RN66575S |
| 665-92 | RN66592S | |

| | Norgren part number | Numatics™ replacement |
|-----------------|---------------------|-----------------------|
| Adsorber | 665-08 | RN66508A |
| | 5568-01 | RN556801A |

Pall/PPC™

| | Pall/PPC part number | Numatics™ replacement |
|------------------|----------------------|-----------------------|
| Prefilter | DT-5C | RP4463P |
| | DT-9C | RP1001P |
| | GPC175AF | RP175P |
| | MCC-1001EC | RP1001P |
| | MCC-1001AF | RP1001P |
| | MCC-1002AF | RP1002P |
| | MCC-1201AF | RP1201P |
| | MCC-4463AF | RP4463P |
| | MCS-1001AF | RP1001P |
| | MCS-1001EC | RP1001P |
| | MCS-1002AF | RP1002P |
| | MCS-1201EC | RP1201P |
| | MCS-4463AF | RP4463P |
| | MCS-4463EC | RP4463P |
| | MDC-1001AF | RP1001P |
| | MDC-1002AF | RP1002P |
| | MDC-1201AF | RP1201P |
| | MDC-4463AF | RP4463P |
| | PCC-060AF | RP4463P |
| | PCC-200AF | RP200P |
| | PCC-350AF | RP350P |
| | PCC-400AF | RP400P |
| | PCC-600AF | RP600P |
| | PCC-700AF | RP700P |
| | PCC-1001AF | RP1001P |
| | PCC-1002AF | RP1002P |
| | PCC-1001EC | RP1001P |
| | PCC-1200AF | RP1200P |
| PCC-1201AF | RP1201P | |



Replacement Filter Elements

| | Pall/PPC part number | Numatics™ replacement |
|-------------------------------|----------------------|-----------------------|
| Prefilter (cont'd) | MDC-4463AF | RP4463P |
| | PCC-060AF | RP4463P |
| | PCC-200AF | RP200P |
| | PCC-350AF | RP350P |
| | PCC-400AF | RP400P |
| | PCC-600AF | RP600P |
| | PCC-700AF | RP700P |
| | PCC-1001AF | RP1001P |
| | PCC-1002AF | RP1002P |
| | PCC-1001EC | RP1001P |
| | PCC-1200AF | RP1200P |
| | PCC-1201AF | RP1201P |
| | PCC-4463AF | RP4463P |
| | PCS-060AF | RP4463P |
| | PCS-200AF | RP200P |
| | PCS-350AF | RP350PSS |
| | PCS-600AF | RP600PSS |
| | PCS-1001AF | RP1001P |
| | PCS-1002AF | RP1002P |
| | PCS-1001EC | RP1001P |
| | PCS-1200AF | RP1200PSS |
| | PCS-1201-AF | RP1201P |
| | PCS-4463AF | RP4463P |
| | PPFK2A07AF | RP2A07P |
| | HEF35AF | RPHEF35P |
| | HEF60AF | RPHEF60P |
| | HEF150AF | RPHEF150P |
| | HEF275AF | RPHEF275P |
| | HEF400AF | RPHEF400P |
| | HEF600AF | RPHEF600P |
| | HEF800AF | RPHEF800P |
| | HEF1000AF | RPHEF1000P |
| HEF1200AF | RPHEF1200P | |

| | Pall/PPC part number | Numatics™ replacement |
|------------------|----------------------|-----------------------|
| Coalescer | GPC175PF | RP175SP |
| | MCC-1001SU | RP1001SP |
| | MCC-1002SU | RP1002SP |
| | MCC-1201SU | RP1201SP |
| | MCC-4463SU | RP4463SP |
| | MCS-1001SU | RP1001SP |
| | MCS-1201SU | RP1201SP |
| | MCS-4463SU | RP4463SP |
| | MDC-1001SU | RP1001SP |
| | MDC-1201SU | RP1201SP |
| | MDC-4463SU | RP4463SP |
| | MDS-1001SU | RP1001SP |
| | MDS-1201SU | RP1201SP |
| | OL-5C | RP4463SP |
| | OL-9C | RP1001SP |
| | PCC-350SU | RP350SP |
| | PCC-600SU | RP600SP |
| | PCC-700SU | RP700SP |
| | PCC-1001SU | RP1001SP |
| | PCC-1002SU | RP1002SP |
| | PCC-1201SU | RP1201SP |
| | PCC-4463SU | RP4463SP |

| | Pall/PPC part number | Numatics™ replacement |
|-------------------------------|----------------------|-----------------------|
| Coalescer (cont'd) | PCS-350SU | RP350SPSS |
| | PCS-700SU | RP700SP |
| | PCS-1001SU | RP1001SP |
| | PCS-1002SU | RP1002SP |
| | PCS-1201SU | RP1201SP |
| | PCS-4463SU | RP4463SP |
| | POC-035SU | RP4463SP |
| | POC-060SU | RP4463SP |
| | POC-200SU | RP200SX |
| | POC-400SU | RP400SX |
| | POC-600SU | RP600SP |
| | POC-1001SU | RP1001SP |
| | POC-1002SU | RP1002SP |
| | POC-1200SU | RP1200SP |
| | POC-1201SU | RP1201SP |
| | POS-060SU | RP4463SP |
| | POS-600SU | RP600SPSS |
| | POS-700SU | RP700SP |
| | POS-1001SU | RP1001SP |
| | POS-1002SU | RP1002SP |
| | POS-1200SU | RP1200SPSS |
| | PPFK2A07SJ | RP2A07SP |
| | PPC-1201SU | RP1201SP |
| | PPC-350SU | RP350SP |
| | PPC-700SU | RP700SP |
| | PPY-1001SU | RP1001SP |
| | PPY-1002SU | RP1002SP |
| | HEF60SU | RPHEF60S |
| | HEF275SU | RPHEF275S |
| | HEF400SU | RPHEF400S |
| HEF600SU | RPHEF600S | |
| HEF800SU | RPHEF800S | |
| HEF1000SU | RPHEF1000S | |
| HEF1200SU | RPHEF1200S | |

| | Pall/PPC part number | Numatics™ replacement |
|-----------------|----------------------|-----------------------|
| Adsorber | MCS-1001CE | RP1001A |
| | MDC-1001CE | RP1001A |
| | MDC-1001CV | RP1001A |
| | MDC-1001SAU | RP1001A |
| | MDC-1002SAU | RP1002A |
| | MDC-1201SAU | RP1201A |
| | MDC-4463SAU | RP4463A |
| | GPC-1200CF | RP1200A |
| | HEF35CF | RPHEF35A |
| | HEF60CF | RPHEF60A |
| | HEF150CF | RPHEF150A |
| | HEF400CF | RPHEF400A |
| | HEF600CF | RPHEF600A |
| | HEF800CF | RPHEF800A |
| | HEF1000CF | RPHEF1000A |
| | HEF1200CF | RPHEF1200A |

Para Información de contacto de su oficina mas cercana visite www.mro.com.mx



Replacement Filter Elements

| | <i>Pall/PPC part number</i> | <i>Numatics™ replacement</i> |
|---------------------------|-----------------------------|------------------------------|
| High Temp. Element | MCC-1001HT | RP1001UI |
| | MCC-1002HT | RP1002UI |
| | MDC-1002HT | RP1002UI |
| | MDS-1002HT | RP1002UI |
| | PCC-1002HT | RP1002UI |
| | MCC-1201HT | RP1201UI |
| | MCS-1001HT | RP1001UI |
| | MDC-1001HT | RP1001UI |
| | MDC-1201HT | RP1201UI |
| | MDS-1001HT | RP1001UI |
| | MDS-1201HT | RP1201UI |
| | PCC-200HT | RP200UI |
| | PCC-350HT | RP350UI |
| | PCC-400HT | RP400UI |
| | PCC-600HT | RP600UI |
| | PCC-1001HT | RP1001UI |
| | PCC-1200HT | RP1200UI |
| | PCC-1201HT | RP1201UI |
| | PCS-200HT | RP200UI |

Parker™

| | <i>Parker part number</i> | <i>Numatics™ replacement</i> |
|-------------------|---------------------------|------------------------------|
| Prefilters | PS101P | RPPS103P |
| | PS102P | RPPS103P |
| | PS103P | RPPS103P |
| | PS104P | RPPS103P |
| | PS201P | RPPS203P |
| | PS202P | RPPS203P |
| | PS203P | RPPS203P |
| | PS204P | RPPS203P |
| | PS301BP | RPPS303P |
| | PS302PP | RPPS303P |
| | PS303BP | RPPS303P |
| | PS304CP | RPPS303P |
| | PS401P | RPPS403P |
| | PS403P | RPPS403P |
| | PS407P | RPPS403P |
| | PS702P | RPPS702P |
| | PS802P | RPPS802P |
| | PS618P | RPPS618P |

| | <i>Parker part number</i> | <i>Numatics™ replacement</i> |
|-------------------|---------------------------|------------------------------|
| Coalescers | 9920-011X1P | RP9920011S |
| | 9920-012X1P | RP9920012S |
| | 9920-013X1P | RP9920013S |
| | 9920-014X1P | RP9920014S |
| | 9920-015X1P | RP9920015U |
| | 9920-016X1P | RP9920016U |
| | 9920-017X1P | RP9920017U |
| | 9920-018X1P | RP9920018U |
| | PS146P | RPPS146 |
| | PS245P | RPPS245 |
| | PS246P | RPPS246 |

| | <i>Parker part number</i> | <i>Numatics™ replacement</i> |
|---------------------------|---------------------------|------------------------------|
| Coalescer (Cont'd) | PS350P | RPPS350 |
| | PS352P | RPPS352 |
| | PS446P | RPPS446 |
| | PS456P | RPPS456 |

Piab™

| | <i>Piab part number</i> | <i>Numatics™ replacement</i> |
|-------------------|-------------------------|------------------------------|
| Prefilters | PPX10RE | RPX10RE |
| | PPX35RE3 | RPX35RE3 |
| | PPX35RE | RPX35RE |
| | PPX50RE | RPX50RE |
| | PPX75RE | RPX75RE |

Pioneer™

| | <i>Pioneer part number</i> | <i>Numatics™ replacement</i> |
|-----------------------------|----------------------------|------------------------------|
| Old Style Prefilters | EHPS1600 | RPEHPS1600 |
| | EP30 | RPEPP30 |
| | EP80 | RPEPP80 |
| | EP130 | RPEPP130 |
| | EP230 | RPEPP230 |
| | EP420 | RPEPP400 |
| | EP700 | RPEPP700 |
| | EP1250 | RPEPP1250 |
| | EPP30 | RPEPP30 |
| | EPP80 | RPEPP80 |
| | EPP130 | RPEPP130 |
| | EPP230 | RPEPP230 |
| | EPP400 | RPEPP400 |
| | EPP700 | RPEPP700 |
| | EPP1250 | RPEPP1250 |

| | <i>Pioneer part number</i> | <i>Numatics™ replacement</i> |
|----------------------------|----------------------------|------------------------------|
| Old Style Coalescer | EPC25 | RPEPC25 |
| | EPC50 | RPEPC50 |
| | EPC80 | RPEPC80 |
| | EPC100 | RPEPC100 |
| | EPC140 | RPEPC140 |
| | EPC250 | RPEPC250 |
| | EPC550 | RPEPC550 |
| | EPC750 | RPEPC750 |
| | EPC3000 | RPEPC3000 |

| | <i>Pioneer part number</i> | <i>Numatics™ replacement</i> |
|----------------------------------|----------------------------|------------------------------|
| Old Style Fine Coalescers | EPM50 | RPEPM50 |
| | EPM85 | RPEPM85 |
| | EPM150 | RPEPM150 |
| | EPM350 | RPEPM350 |
| | EPM450 | RPEPM450 |



Replacement Filter Elements

| | <i>Pioneer part number</i> | <i>Numatics™ replacement</i> |
|-------------------|----------------------------|------------------------------|
| Prefilters | EPS30 | RPEPS30 |
| | EPS40 | RPEPS40 |
| | EPS100 | RPEPS100 |
| | EPS150 | RPEPS150 |
| | EPS200 | RPEPS200 |
| | EPS250 | RPEPS250 |
| | EPS425 | RPEPS425 |
| | EPS550 | RPEPS550 |
| | EPS750 | RPEPS750 |
| | EPS1000 | RPEPS1000 |
| | EPS1300 | RPEPS1300 |
| | EPS1700 | RPEPS1700C |
| | EPS2000 | RPEPS2000C |
| | EPS2600 | RPEPS2600C |
| | EPS3500 | RPEPS3500C |
| | EPS5200 | RPEPS5200C |
| | EPS10400 | RPEPS10400C |

| | <i>Pioneer part number</i> | <i>Numatics™ replacement</i> |
|-------------------|----------------------------|------------------------------|
| Coalescers | ECS25 | RPECS25 |
| | ECS35 | RPECS35 |
| | ECS60 | RPECS60 |
| | ECS90 | RPECS90 |
| | ECS115 | RPECS115 |
| | ECS155 | RPECS155 |
| | ECS250 | RPECS250 |
| | ECS350 | RPECS350 |
| | ECS450 | RPECS450 |
| | ECS600 | RPECS600 |
| | ECS800 | RPECS800 |
| | ECS1050 | RPECS1050 |
| | ECS1250 | RPECS1250C |
| | ECS1650 | RPECS1650C |
| | ECS2100 | RPECS2100C |
| | ECS3100 | RPECS3100C |
| | ECS5000 | RPECS5000C |
| | ECS6600 | RPECS6600C |
| | ECS11500 | RPECS11500C |
| | ECS18000 | RPECS18000C |
| | ECS22000 | RPECS22000C |

| | <i>Pioneer part number</i> | <i>Numatics™ replacement</i> |
|------------------------|----------------------------|------------------------------|
| Fine Coalescers | EMS20 | RPEMS20 |
| | EMS25 | RPEMS25 |
| | EMS50 | RPEMS50 |
| | EMS75 | RPEMS75 |
| | EMS100 | RPEMS100 |
| | EMS125 | RPEMS125 |
| | EMS185 | RPEMS185 |
| | EMS260 | RPEMS260 |
| | EMS350 | RPEMS350 |
| | EMS450 | RPEMS450 |
| | EMS600 | RPEMS600 |
| | EMS800 | RPEMS800C |
| | EMS1000 | RPEMS1000C |
| | EMS2500 | RPEMS2500C |

| Pneumatech™ | | |
|--------------------|----------------------------|------------------------------|
| | <i>Pneumatech part no.</i> | <i>Numatics™ replacement</i> |
| Coalescers | C-25-10 | RPC2510 |
| | C-50-10 | RPC5010 |
| | C-60-15 | RPC6015 |
| | C-95-15 | RPC9515 |
| | C-130-20 | RPC13020 |
| | C-130-25 | RPC13025 |
| | C-187-20 | RPC18720 |
| | C-187-25 | RPC18725 |
| | C-235-25 | RPC23525 |
| | C-280-25 | RPC28025 |
| | C-280-35 | RPC28035 |
| | C-280-51 | RPC28051 |
| | C-360-85 | RPC36085 |
| | C-25-10/G2 | RPC2510R |
| | C-25-10/G4 | RPC2510R |
| | C-25-10/G8 | RPC2510T |
| | C-25-10/G10 | RPC2510U |
| | C-60-15/G2 | RPC6015R |
| | C-60-15/G4 | RPC6015R |
| | C-60-15/G8 | RPC6015T |
| | C-60-15/G10 | RPC6015U |
| | C-95-15/G2 | RPC9515R |
| | C-95-15/G4 | RPC9515R |
| | C-95-15/G8 | RPC9515T |
| | C-95-15/G10 | RPC9515U |
| | C-130-20/G2 | RPC13020R |
| | C-130-20/G4 | RPC13020R |
| | C-130-20/G8 | RPC13020T |
| | C-130-20/G10 | RPC13020U |
| | C-130-25/G2 | RPC13025R |
| | C-130-25/G4 | RPC13025R |
| | C-130-25/G8 | RPC13025T |
| | C-130-25/G10 | RPC13025U |
| | C-187-20/G2 | RPC18720R |
| C-187-20/G4 | RPC18720R | |
| C-187-20/G8 | RPC18720T | |
| C-187-20/G10 | RPC18720U | |
| C-187-25/G2 | RPC18725R | |
| C-187-25/G4 | RPC18725R | |
| C-187-25/G8 | RPC18725T | |
| C-187-25/G10 | RPC18725U | |
| C-235-25/G2 | RPC23525R | |
| C-235-25/G4 | RPC23525R | |
| C-235-25/G8 | RPC23525T | |
| C-235-25/G10 | RPC23525U | |

Para Información de contacto de su oficina mas cercana visite www.mro.com.mx



| | <i>Pneumatech part no.</i> | <i>Numatics™ replacement</i> |
|--------------------------------|----------------------------|------------------------------|
| Coalescers (cont'd) | C-280-25/G2 | RPC28025R |
| | C-280-25/G4 | RPC28025R |
| | C-280-25/G8 | RPC28025T |
| | C-280-25/G10 | RPC28025U |
| | C-280-35/G2 | RPC28035R |
| | C-280-35/G4 | RPC28035R |
| | C-280-35/G8 | RPC28035T |
| | C-280-35/G10 | RPC28035U |
| | C-280-51/G2 | RPC28051R |
| | C-280-51/G4 | RPC28051R |
| | C-280-51/G8 | RPC28051T |
| | C-280-51/G10 | RPC28051U |
| | C-250-85/G2 | RPC25085R |
| | C-250-85/G4 | RPC25085R |
| | C-250-85/G8 | RPC25085T |
| | C-250-85/G10 | RPC25085U |
| | C-360-85/G2 | RPC36085R |
| | C-360-85/G4 | RPC36085R |
| | C-360-85/G8 | RPC36085T |
| | C-360-85/G10 | RPC36085U |

| Adsorbers | <i>Pneumatech part no.</i> | <i>Numatics™ replacement</i> |
|------------------|----------------------------|------------------------------|
| | A-25-10 | RPA2510 |
| | A-50-10 | RPA5010 |
| | A-60-15 | RPA6015 |
| | A-95-15 | RPA9515 |
| | A-130-20 | RPA13020 |
| | A-130-25 | RPA13025 |
| | A-187-20 | RPA18720 |
| | A-187-25 | RPA18725 |
| | A-235-25 | RPA23525 |
| | A-280-25 | RPA28025 |
| | A-280-35 | RPA28035 |
| | A-280-51 | RPA28051 |
| | A-280-85 | RPA28085 |
| | A-360-85 | RPA36085 |

| Interceptors | <i>Pneumatech part no.</i> | <i>Numatics™ replacement</i> |
|---------------------|----------------------------|------------------------------|
| | P-25-10 | RPP2510 |
| | P-50-10 | RPP5010 |
| | P-60-15 | RPP6015 |
| | P-95-15 | RPP9515 |
| | P-130-20 | RPP13020 |
| | P-187-20 | RPP18720 |
| | P-130-25 | RPP13025 |
| | P-187-25 | RPP18725 |
| | P-235-25 | RPP23525 |
| | P-280-25 | RPP28025 |
| | P-280-35 | RPP28035 |
| | P-280-51 | RPP28051 |
| | P-360-85 | RPP36085 |

| | <i>Pneumatech part no.</i> | <i>Numatics™ replacement</i> |
|---|----------------------------|------------------------------|
| High Temp. Elements (450°) | C-280-35/H | RPC28035H |
| | C-280-51/H | RPC28051H |
| | C-360-85/H | RPC36085H |
| | C-280-35/G2/H | RPC28035RH |
| | C-280-35/G4/H | RPC28035RH |
| | C-280-35/G8/H | RPC28035TH |
| | C-280-35/G10/H | RPC28035UH |
| | C-280-51/G2/H | RPC28051RH |
| | C-280-51/G4/H | RPC28051RH |
| | C-280-51/G8/H | RPC28051TH |
| | C-280-51/G10/H | RPC28051UH |
| | C-250-85/G2/H | RPC25085RH |
| | C-250-85/G4/H | RPC25085RH |
| | C-250-85/G8/H | RPC25085TH |
| | C-250-85/G10/H | RPC25085UH |
| | C-360-85/G2/H | RPC36085RH |
| | C-360-85/G4/H | RPC36085RH |
| | C-360-85/G8/H | RPC36085TH |
| | C-360-85/G10/H | RPC36085UH |

| Coalescer W/Built-in Prefilter | <i>Pneumatech part no.</i> | <i>Numatics™ replacement</i> |
|---|----------------------------|------------------------------|
| | Q-25-10 | RPQ2510 |
| | Q-50-10 | RPQ5010 |
| | Q-60-15 | RPQ6015 |
| | Q-95-15 | RPQ9515 |
| | Q-130-20 | RPQ13020 |
| | Q-130-25 | RPQ13025 |
| | Q-187-20 | RPQ18720 |
| | Q-187-25 | RPQ18725 |
| | Q-235-25 | RPQ23525 |
| | Q-280-25 | RPQ28025 |
| | Q-280-35 | RPQ28035 |
| | Q-25-10/G2 | RPQ2510R |
| | Q-25-10/G4 | RPQ2510R |
| | Q-25-10/G8 | RPQ2510T |
| | Q-25-10/G10 | RPQ2510U |
| | Q-50-10/G2 | RPQ5010R |
| | Q-50-10/G4 | RPQ5010R |
| | Q-50-10/G8 | RPQ5010T |
| | Q-50-10/G10 | RPQ5010U |
| | Q-60-15/G2 | RPQ6015R |
| | Q-60-15/G4 | RPQ6015R |
| | Q-60-15/G8 | RPQ6015T |
| | Q-60-15/G10 | RPQ6015U |
| | Q-95-15/G2 | RPQ9515R |
| | Q-95-15/G4 | RPQ9515R |
| | Q-95-15/G8 | RPQ9515T |
| | Q-95-15/G10 | RPQ9515U |



Replacement Filter Elements

| | <i>Pneumatech part no.</i> | <i>Numatics™ replacement</i> |
|--|----------------------------|------------------------------|
| Coalescer W/Built-in Prefilter (cont'd) | Q-130-20/G2 | RPQ13020R |
| | Q-130-20/G4 | RPQ13020R |
| | Q-130-20/G8 | RPQ13020T |
| | Q-130-20/G10 | RPQ13020U |
| | Q-130-25/G2 | RPQ13025R |
| | Q-130-25/G4 | RPQ13025R |
| | Q-130-25/G8 | RPQ13025T |
| | Q-130-25/G10 | RPQ13025U |
| | Q-187-20/G2 | RPQ18720R |
| | Q-187-20/G4 | RPQ18720R |
| Q-187-20/G8 | RPQ18720T | |
| Q-187-20/G10 | RPQ18720U | |
| Q-187-25/G2 | RPQ18725R | |
| Q-187-25/G4 | RPQ18725R | |
| Q-187-25/G8 | RPQ18725T | |
| Q-187-25/G10 | RPQ18725U | |
| Q-235-25/G2 | RPQ23525R | |
| Q-235-25/G4 | RPQ23525R | |
| Q-235-25/G8 | RPQ23525T | |
| Q-235-25/G10 | RPQ23525U | |
| Q-280-25/G2 | RPQ28025R | |
| Q-280-25/G4 | RPQ28025R | |
| Q-280-25/G8 | RPQ28025T | |
| Q-280-25/G10 | RPQ28025U | |
| Q-280-35/G2 | RPQ28035R | |
| Q-280-35/G4 | RPQ28035R | |
| Q-280-35/G8 | RPQ28035T | |
| Q-280-35/G10 | RPQ28035U | |

| | <i>Pureair part number</i> | <i>Numatics™ replacement</i> |
|-------------------|----------------------------|------------------------------|
| Prefilters | 1350 | RPA1350P |
| | 1351 | RPA1351P |
| | 1352 | RPA1352P |
| Coalescers | 1357 | RPA1407S |
| | 1358 | RPA1407S |
| | 1359 | RPA1408S |
| | 1360 | RPA1408S |
| | 1361 | RPA1408S |
| | 1362 | RPA1408S |
| | 1367 | RPA1408S |
| | 1368 | RPA1408S |
| | 1406 | RPA1406S |
| | 1407 | RPA1407S |
| | 1408 | RPA1408S |

| | <i>Rietschle part number</i> | <i>Numatics™ replacement</i> |
|--------------------|------------------------------|------------------------------|
| Particulate | 731142 | RR731142 |
| | 731143 | RR731143 |

| | <i>SMC part number</i> | <i>Numatics™ replacement</i> |
|-------------------|------------------------|------------------------------|
| Prefilters | 63053 | RSMC63053 |
| | AFF-EL4B | RSMCAFFEL4B |
| | AFF-EL8B | RSMCAFFEL8B |
| | AFF-EL11B | RSMCAFFEL11B |
| | AFF-EL22B | RSMCAFFEL22B |
| | AFF-EL37B | RSMCAFFEL37B |
| | AFF-EL75B | RSMCAFFEL75B |
| | NAF2000-IR | RSMC2000IR |
| | NAF2000-IR-2 | RSMC2000IR |
| | NAF2000-IR-10 | RSMC2000IR |
| | NAF2000-IR-20 | RSMC2000IR |
| | NAF2000-IR-40 | RSMC2000IR |
| | NAFD3000IR | RSMCNAFD3000IR |

| | | |
|-------------------|-----------|--------------|
| Coalescers | AMG-EL250 | RSMCAMGEL250 |
| | AMG-EL350 | RSMCAMGEL350 |
| | AMG-EL450 | RSMCAMGEL450 |
| | AMG-EL550 | RSMCAMGEL550 |
| | AMG-EL650 | RSMCAMGEL650 |
| | AMG-EL850 | RSMCAMGEL850 |
| | AMD200-IR | RSMC200IR |
| | AMD-EL250 | RSMCAMDEL250 |
| | AMD-EL350 | RSMCAMDEL350 |
| | AMD-EL450 | RSMCAMDEL450 |
| | AMD-EL550 | RSMCAMDEL550 |
| | AMD-EL650 | RSMCAMDEL650 |
| | AMD-EL850 | RSMCAMDEL850 |
| | AME-EL250 | RSMCAMEEL250 |
| | AME-EL350 | RSMCAMEEL350 |
| | AME-EL450 | RSMCAMEEL450 |
| | AME-EL550 | RSMCAMEEL550 |
| | AME-EL650 | RSMCAMEEL650 |
| | AME-EL850 | RSMCAMEEL850 |
| | AM-EL250 | RSMCAMEL250 |
| | AM-EL350 | RSMCAMEL350 |
| | AM-EL450 | RSMCAMEL450 |
| | AM-EL550 | RSMCAMEL550 |
| | AM-EL650 | RSMCEL650 |
| | AM-EL850 | RSMCAMEL850 |

| | | |
|------------------|-----------|--------------|
| Adsorbers | AMF-EL250 | RSMCAMFEL250 |
| | AMF-EL350 | RSMCAMFEL350 |
| | AMF-EL450 | RSMCAMFEL450 |
| | AMF-EL550 | RSMCAMFEL550 |
| | AMF-EL650 | RSMCAMFEL650 |
| | AMF-EL850 | RSMCAMFEL850 |



Speedaire™

| | <i>Speedaire part number</i> | <i>Numatics™ replacement</i> |
|-------------------|------------------------------|------------------------------|
| Prefilters | 1R423 | RPPS103P |
| | 1R424 | RPPS203P |
| | 1R425 | RPPS303P |
| | 1R426 | RPPS403P |

| | | |
|-------------------|-------|---------|
| Coalescers | 1R427 | RPPS146 |
| | 1R428 | RPPS245 |
| | 1R429 | RPPS246 |
| | 1R431 | RPPS350 |
| | 1R476 | RPPS352 |

Sullair™

| | <i>Sullair part number</i> | <i>Numatics™ replacement</i> |
|-------------------|----------------------------|------------------------------|
| Prefilters | 1350 | RS1350P |
| | 1351 | RS1351P |
| | 1352 | RS1352P |

| | | |
|------------------------|------------|----------|
| General Purpose | 250024-423 | RS24423U |
| | 250024-424 | RS24424U |
| | 250024-425 | RS24425U |
| | 250024-426 | RS24426U |
| | 250024-427 | RS24427U |
| | 250024-428 | RS24428U |
| | 250024-429 | RS24429U |
| | 250024-430 | RS24430U |
| | 250030-644 | RS30644U |

| | | |
|----------------------------------|------------|----------|
| High Efficiency Coalescer | 1357 | RS1407S |
| | 1358 | RS1407S |
| | 1359 | RS1408S |
| | 1360 | RS1408S |
| | 1361 | RS1408S |
| | 1362 | RS1408S |
| | 1367 | RS1408S |
| | 1406 | RS1406S |
| | 1407 | RS1407S |
| | 1408 | RS1408S |
| | 250024-431 | RS24431S |
| | 250024-432 | RS24432S |
| | 250024-433 | RS24433S |
| | 250024-434 | RS24434S |
| | 250024-435 | RS24435S |
| | 250024-436 | RS24436S |
| | 250024-437 | RS24437S |
| | 250024-438 | RS24438S |
| | 250030-655 | RS30655S |
| 405500 | RS405500S | |
| 405509 | RS405509S | |
| 405510 | RS405510S | |

Adsorbers

| | <i>Sullair part number</i> | <i>Numatics™ replacement</i> |
|------------------|----------------------------|------------------------------|
| Adsorbers | 1370 | RS1413A |
| | 1374 | RS1413A |
| | 1375 | RS1413A |
| | 1376 | RS1413A |
| | 1377 | RS1413A |
| | 1378 | RS1413A |
| | 1413 | RS1413A |
| | 1718 | RS1413A |
| | 250024-439 | RS24439A |
| | 250024-440 | RS24440A |
| | 250024-441 | RS24441A |
| | 250024-443 | RS24443A |
| | 250024-444 | RS24444A |
| | 250024-445 | RS24445A |
| | 250024-446 | RS24446A |
| | 250024-447 | RS24447A |
| | 250030-646 | RS30646A |

Technolab™

| | <i>Technolab part number</i> | <i>Numatics™ replacement</i> |
|------------------------|------------------------------|------------------------------|
| General Purpose | TLP0441E | RTTLP0441U |
| | TLP0647E | RTTLP0647U |
| | TLP01045E | RTTLP01045U |

| | | |
|-------------------|-----------|-------------|
| Coalescers | TLH0441E | RTTLH0441S |
| | TLH0647E | RTTLH0647S |
| | TLH01045E | RTTLH01045S |

| | | |
|-------------------------|-----------|-------------|
| Activated Carbon | TLC0441E | RTTLC0441A |
| | TLC0647E | RTTLC0647A |
| | TLC01045E | RTTLC01045A |

Ultrafilter™

| | <i>Ultrafilter part number</i> | <i>Numatics™ replacement</i> |
|-------------------|--------------------------------|------------------------------|
| Prefilters | PE 15/3 | RUPE153P |
| | PE20/3 | RUPE203P |
| | PE30/3 | RUPE303P |
| | PE30/5 | RUPE305P |
| | PE 03/05 | RUPE0305P |
| | PE 04/20 | RUPE0420P |
| | PE 05/20 | RUPE0520P |
| | PE05/25 | RUPE0525P |
| | PE07/25 | RUPE0725P |
| | PE07/30 | RUPE0730P |
| | PE10/30 | RUPE1030P |
| | PE15/30 | RUPE1530P |
| | PE20/30 | RUPE2030P |
| | PE30/30 | RUPE3030P |
| | PE30/50 | RUPE3050P |
| | PEP 03/10 S | RUPEP0310P |
| | PEP 04/20 S | RUPEP0420P |



Replacement Filter Elements

| | Ultrafilter part number | Numatics™ replacement | |
|---------------------|-------------------------|-----------------------|-----------|
| Fine Filters | FF 15/3 | RUFF153U | |
| | FF30/3 | RUFF303U | |
| | FF30/5 | RUFF305UP | |
| | FF 03/05 | RUFF0305U | |
| | FF 03/10 | RUFF0310U | |
| | FF 04/20 | RUFF0420U | |
| | FF 05/20 | RUFF0520U | |
| | FF05/25 | RUFF0525U | |
| | FF07/25 | RUFF0725U | |
| | FF07/30 | RUFF0730U | |
| | FF10/30 | RUFF1030U | |
| | FF15/30 | RUFF1530U | |
| | FF20/30 | RUFF2030U | |
| | FF30/30 | RUFF3030U | |
| | FF30/50 | RUFF3050UP | |
| | FFP 03/10 S | RUFFP0310U | |
| | FFP 04/20 S | RUFFP0420U | |
| | FFP12/3 | RUFFP123 | |
| | FFP14/3 | RUFFP143 | |
| | | MF30/3 | RUMF303S |
| | | MF30/5 | RUMF305SP |
| | MF 02/05 | RUMF0205S | |
| | MF 03/05 | RUMF0305S | |
| | MF 03/10 | RUMF0310S | |
| | MF 04/10 | RUMF0410S | |
| | MF 04/20 | RUMF0420S | |
| | MF 05/20 | RUMF0520S | |
| | MF05/25 | RUMF0525S | |
| | MF07/25 | RUMF0725S | |
| | MF07/30 | RUMF0730S | |
| | MF10/30 | RUMF1030S | |
| | MF15/30 | RUMF1530S | |
| | MF20/30 | RUMF2030S | |
| | MF30/30 | RUMF3030S | |
| | MF30/50 | RUMF3050SP | |
| | MFP 03/10 S | RUMFP0310S | |
| | MFP 04/20 S | RUMFP0420S | |

| | Ultrafilter part number | Numatics™ replacement |
|--------------------------|-------------------------|-----------------------|
| Sub Micro Filters | SMF 15/3 | RUSMF153R |
| | SMF30/3 | RUSMF303R |
| | SMF30/5 | RUSMF305RP |
| | SMF 03/05 | RUSMF0305R |
| | SMF 03/10 | RUSMF0310R |
| | SMF 04/20 | RUSMF0420R |
| | SMF 05/20 | RUSMF0520R |
| | SMF 05/25 | RUSMF0525R |
| | SMF 07/25 | RUSMF0725R |
| | SMF 07/30 | RUSMF0730R |
| | SMF 10/30 | RUSMF1030R |
| | SMF15/30 | RUSMF1530R |
| | SMF20/30 | RUSMF2030R |
| | SMF30/30 | RUSMF3030R |

| | Ultrafilter part number | Numatics™ replacement |
|-----------------------------------|-------------------------|-----------------------|
| Sub Micro Filters (cont'd) | SMF30/50 | RUSMF3050RP |
| | SMFP 03/10 S | RUSMFP0310R |
| | SMFP 04/20 S | RUSMFP0420R |

| | Ultrafilter part number | Numatics™ replacement |
|-------------------------|-------------------------|-----------------------|
| Carbon Adsorbers | AK 15/3 | RUAK153A |
| | AK30/5 | RUAK305A |
| | AK 03/05 | RUAK0305A |
| | AK 03/10 | RUAK0310A |
| | AK 04/10 | RUAK0410A |
| | AK 04/20 | RUAK0420A |
| | AK 05/20 | RUAK0520A |
| | AK 05/25 | RUAK0525A |
| | AK 07/25 | RUAK0725A |
| | AK 07/30 | RUAK0730A |
| | AK 10/30 | RUAK1030A |
| | AK15/30 | RUAK1530A |
| | AK20/30 | RUAK2030A |
| | AK30/30 | RUAK3030A |
| | AK30/50 | RUAK3050A |
| | AKP 03/10 S | RUAKP0310A |
| AKP 04/20 S | RUAKP0420A | |

Van Air™

| | Van Air part number | Numatics™ replacement |
|-------------------|---------------------|-----------------------|
| Prefilters | KE-6/60 | RVKE660 |
| | KE-6/100 | RVKE6100 |
| | KE-15 | RVKE15 |
| | KE-22 | RVKE22 |

| | Van Air part number | Numatics™ replacement |
|------------------------------|---------------------|-----------------------|
| High Temp. Prefilters | KE-15HT | RVKE15UH |
| | KE-22HT | RVKE22UH |

| | Van Air part number | Numatics™ replacement |
|-------------------|---------------------|-----------------------|
| Coalescers | CE-8/60 | RVCE860 |
| | CE-8/100 | RVCE8100 |
| | CE-15 | RVCE15 |
| | CE-22/500 | RVCE22 |

| | Van Air part number | Numatics™ replacement |
|------------------------|---------------------|-----------------------|
| Fine Coalescers | CXE-8/100 | RVXE8100 |
| | CXE-15 | RVXE15 |

| | Van Air part number | Numatics™ replacement |
|--|---------------------|-----------------------|
| E100 and E200 SERIES High Efficiency Coalescers | E100-30-C | RV30C |
| | E100-50-C | RV50C |
| | E100-75-C | RV75C |
| | E100-100-C | RV100C |
| | E100-150-C | RV150C |
| | E100-225-C | RV225C |
| | E100-350-C | RV350C |
| | E100-500-C | RV500C1 |
| | E200-265-C | RV265C2 |
| | E200-500-C | RV500C2 |
| | E200-800-C | RV800C2 |
| | E200-1000-C | RV1000C2 |

Para Información de contacto de su oficina mas cercana visite www.mro.com.mx



| | <i>Van Air part number</i> | <i>Numatics™ replacement</i> |
|-----------------------------------|----------------------------|------------------------------|
| General Purpose Coalescers | E100-30-B | RV30B |
| | E100-50-B | RV50B |
| | E100-75-B | RV75B |
| | E100-100-B | RV100B |
| | E100-150-B | RV150B |
| | E100-225-B | RV225B |
| | E100-350-B | RV350B |
| | E100-500-B | RV500B1 |
| | E200-265-B | RV265B2 |
| | E200-500-B | RV500B2 |
| | E200-800-B | RV800B2 |
| | E200-1000-B | RV1000B2 |

| | <i>Van Air part number</i> | <i>Numatics™ replacement</i> |
|------------------------------------|----------------------------|------------------------------|
| General Purpose Particulate | E100-30-RB | RV30RB |
| | E100-50-RB | RV50RB |
| | E100-75-RB | RV75RB |
| | E100-100-RB | RV100RB |
| | E100-150-RB | RV150RB |
| | E100-225-RB | RV225RB |
| | E100-350-RB | RV350RB |
| | E100-500-RB | RV500RB1 |
| | E200-265RB | RV265RB2 |
| | E200-500-RB | RV500RB2 |
| | E200-800-RB | RV800RB2 |
| | E200-1000-RB | RV1000RB2 |

| | <i>Van Air part number</i> | <i>Numatics™ replacement</i> |
|--------------------------|----------------------------|------------------------------|
| Coarse Coalescers | E100-30-A | RV30A |
| | E100-50-A | RV50A |
| | E100-75-A | RV75A |
| | E100-100-A | RV100A |
| | E100-150-A | RV150A |
| | E100-225-A | RV225A |
| | E100-350-A | RV350A |
| | E100-500-A | RV500A1 |
| | E200-265-A | RV265A2 |
| | E200-500-A | RV500A2 |
| | E200-800-A | RV800A2 |
| | E200-1000-A | RV1000A2 |

| | <i>Van Air part number</i> | <i>Numatics™ replacement</i> |
|---------------------------|----------------------------|------------------------------|
| Coarse Particulate | E100-30-RA | RV30RA |
| | E100-50-RA | RV50RA |
| | E100-75-RA | RV75RA |
| | E100-100-RA | RV100RA |
| | E100-150-RA | RV150RA |
| | E100-225-RA | RV225RA |
| | E100-350-RA | RV350RA |
| | E100-500-RA | RV500RA1 |
| | E200-265-RA | RV265RA2 |
| | E200-500-RA | RV500RA2 |
| | E200-800-RA | RV800RA2 |
| | E200-1000-RA | RV1000RA2 |

| | <i>Van Air part number</i> | <i>Numatics™ replacement</i> |
|--------------------------------|----------------------------|------------------------------|
| Ultra Coarse Coalescers | E100-30-AA | RV30AA |
| | E100-50-AA | RV50AA |
| | E100-75-AA | RV75AA |
| | E100-100-AA | RV100AA |
| | E100-150-AA | RV150AA |
| | E100-225-AA | RV225AA |
| | E100-350-AA | RV350AA |
| | E100-500-AA | RV500AA1 |
| | E200-265AA | RV265AA2 |
| | E200-500-AA | RV500AA2 |
| | E200-800AA | RV800AA2 |
| | E200-1000AA | RV1000AA2 |

| | <i>Van Air part number</i> | <i>Numatics™ replacement</i> |
|---------------------------------|----------------------------|------------------------------|
| Extra Coarse Particulate | E100-30-RAA | RV30RAA |
| | E100-50-RAA | RV50RAA |
| | E100-75-RAA | RV75RAA |
| | E100-100-RAA | RV100RAA |
| | E100-150-RAA | RV150RAA |
| | E100-225-RAA | RV225RAA |
| | E100-350-RAA | RV350RAA |
| | E100-500-RAA | RV500RAA1 |
| | E200-265-RAA | RV265RAA2 |
| | E200-500-RAA | RV500RAA2 |
| | E200-800-RAA | RV800RAA2 |
| | E200-1000-RAA | RV1000RAA2 |

| | <i>Van Air part number</i> | <i>Numatics replacement</i> |
|------------------------------------|----------------------------|-----------------------------|
| High Efficiency Particulate | E100-30-RC | RV30RC |
| | E100-50-RC | RV50RC |
| | E100-75-RC | RV75RC |
| | E100-100-RC | RV100RC |
| | E100-150-RC | RV150RC |
| | E100-225-RC | RV225RC |
| | E100-350-RC | RV350RC |
| | E100-500-RC | RV500RC1 |
| | E200-265-RC | RV265RC2 |
| | E200-500-RC | RV500RC2 |
| | E200-800RC | RV800RC2 |
| | E200-1000-RC | RV1000RC2 |

| | <i>Van Air part number</i> | <i>Numatics™ replacement</i> |
|------------------|----------------------------|------------------------------|
| Adsorbers | E100-30-RD | RV30RD |
| | E100-50-RD | RV50RD |
| | E100-75-RD | RV75RD |
| | E100-100-RD | RV100RD |
| | E100-150-RD | RV150RD |
| | E100-225-RD | RV225RD |
| | E100-350-RD | RV350RD |
| | E100-500-RD | RV500RD1 |
| | E200-265-RD | RV265RD2 |
| | E200-500-RD | RV500RD2 |
| | E200-800-RD | RV800RD2 |
| | E200-1000-RD | RV1000RD2 |



Replacement Filter Elements

| | Van Air part number | Numatics™ replacement |
|------------------------|---------------------|-----------------------|
| E101/102 Series | E101/E102-500-A | RV500A |
| | E101/E102-500-B | RV500B |
| | E101/E102-500-C | RV500C |
| | E101/E102-500-RA | RV500RA |
| | E101/E102-500-RB | RV500RB |
| | E101/E102-500-RC | RV500RC |
| | E101/102-500-HT | RV500UH |
| | E101/E102-625-A | RV625A |
| | E101/E102-625-B | RV625B |
| | E101/E102-625-C | RV625C |
| | E101/E102-625-RA | RV625RA |
| | E101/E102-625-RB | RV625RB |
| | E101/E102-625-RC | RV625RC |
| | E101/E102-625-HT | RV625UH |

| | Walker part number | Numatics™ replacement |
|---------------------------|--------------------|-----------------------|
| Activated Charcoal | E 361 AC | RWE361A |
| | E 371 AC | RWE371A |
| | E 511 AC | RWE511A |
| | E 711 AC | RWE711A |
| | E 731 AC | RWE731A |
| | E 811 AC | RWE811A |
| | E 821 AC | RWE821A |
| | E 831 AC | RWE831A |
| | E 851 AC | RWE851A |
| | E 1251 AC | RWE1251A |
| | E 1261 AC | RWE1261A |
| E 1281 AC | RWE1281A | |

| Walker™ | | |
|--------------------|--------------------|-----------------------|
| | Walker part number | Numatics™ replacement |
| Particulate | E 361 X5 | RWE361P |
| | E 371 X5 | RWE371P |
| | E 511 X5 | RWE511P |
| | E 711 X5 | RWE711P |
| | E 731 X5 | RWE731P |
| | E 811 X5 | RWE811P |
| | E 821 X5 | RWE821P |
| | E 831 X5 | RWE831P |
| | E 851 X5 | RWE851P |
| | E 1251 X5 | RWE1251P |
| | E 1261 X5 | RWE1261P |
| | E 1281 X5 | RWE1281P |

| | | |
|-------------------------|-----------|----------|
| Coarse Coalescer | E 361 X1 | RWE361U |
| | E 371 X1 | RWE371U |
| | E 511 X1 | RWE511U |
| | E 711 X1 | RWE711U |
| | E 731 X1 | RWE731U |
| | E 811 X1 | RWE811U |
| | E 821 X1 | RWE821U |
| | E 831 X1 | RWE831U |
| | E 851 X1 | RWE851U |
| | E 1251 X1 | RWE1251U |
| | E 1261 X1 | RWE1261U |
| E 1281 X1 | RWE1281U | |

| | | |
|-----------------------|-----------|----------|
| Fine Coalescer | E 361 XA | RWE361S |
| | E 371 XA | RWE371S |
| | E 511 XA | RWE511S |
| | E 711 XA | RWE711S |
| | E 731 XA | RWE731S |
| | E 811 XA | RWE811S |
| | E 821 XA | RWE821S |
| | E 831 XA | RWE831S |
| | E 851 XA | RWE851S |
| | E 1251 XA | RWE1251S |
| | E 1261 XA | RWE1261S |
| | E 1281 XA | RWE1281S |

| Watts™ | | |
|------------------|-------------------|-----------------------|
| | Watts part number | Numatics™ replacement |
| Prefilter | EKF702-P9-0771 | RWP90771P |
| | EKF702-P9-0772 | RWP90772P |
| | EKF702-P9-0773 | RWP90773P |
| | EKF702-P9-0774 | RWP90774P |
| | EKF702-P9-0775 | RWP90775P |
| | EKF702-P9-0776 | RWP90776P |
| | EKF702-P9-0777 | RWP90777P |
| | EKF702-P9-0778 | RWP90778P |
| | EKF702-P9-0779 | RWP90779P |
| | EKF901-35C | RWF90135P |
| | EKF901-60C | RWF90160P |
| | EKF901-100C | RWF901100P |
| | EKF901-170C | RWF901170P |
| | EKF901-250C | RWF901250P |
| | EKF901-375C | RWF901375P |
| | EKF901-485C | RWF901485P |
| | EKF901-625C | RWF901625P |
| | EKF901-780C | RWF901780P |

| | | |
|-------------------|----------------|-----------|
| Coalescers | EKF701-C1-0771 | RWC10771R |
| | EKF701-C1-0772 | RWC10772R |
| | EKF701-C1-0773 | RWC10773R |
| | EKF701-C1-0774 | RWC10774R |
| | EKF701-C1-0775 | RWC10775R |
| | EKF701-C1-0776 | RWC10776R |
| | EKF701-C1-0777 | RWC10777R |
| | EKF701-C1-0778 | RWC10778R |
| | EKF701-C1-0779 | RWC10779R |
| | EKF701-C3-0771 | RWC30771S |
| | EKF701-C3-0772 | RWC30772S |
| | EKF701-C3-0773 | RWC30773S |
| | EKF701-C3-0774 | RWC30774S |
| | EKF701-C3-0775 | RWC30775S |
| | EKF701-C3-0776 | RWC30776S |
| | EKF701-C3-0777 | RWC30777S |
| | EKF701-C3-0778 | RWC30778S |
| | EKF701-C3-0779 | RWC30779S |
| | EKF701-C7-0771 | RWC70771T |
| | EKF701-C7-0772 | RWC70772T |
| | EKF701-C7-0773 | RWC70773T |
| | EKF701-C7-0774 | RWC70774T |
| | EKF701-C7-0775 | RWC70775T |
| | EKF701-C7-0776 | RWC70776T |

Para Información de contacto de su oficina mas cercana visite www.mro.com.mx



| | Watts part number | Numatics™ replacement |
|----------------------------|-------------------|-----------------------|
| Coalescers (cont'd) | EKF701-C7-0777 | RWC70777T |
| | EKF701-C7-0778 | RWC70778T |
| | EKF701-C7-0779 | RWC70779T |
| | EKF901-35T | RWF90135U |
| | EKF901-60T | RWF90160U |
| | EKF901-100T | RWF901100U |
| | EKF901-170T | RWF901170U |
| | EKF901-250T | RWF901250U |
| | EKF901-375T | RWF901375U |
| | EKF901-485T | RWF901485U |
| | EKF901-625T | RWF901625U |
| | EKF901-780T | RWF901780U |
| | EKF901-35B | RWF90135S |
| | EKF901-60B | RWF90160S |
| | EKF901-100B | RWF901100S |
| | EKF901-170B | RWF901170S |
| | EKF901-250B | RWF901250S |
| | EKF901-375B | RWF901375S |
| | EKF901-485B | RWF901485S |
| | EKF901-625B | RWF901625S |
| | EKF901-780B | RWF901780S |
| | EKF901-35A | RWF90135R |
| | EKF901-60A | RWF90160R |
| | EKF901-100A | RWF901100R |
| | EKF901-170A | RWF901170R |
| | EKF901-250A | RWF901250R |
| | EKF901-375A | RWF901375R |
| | EKF901-485A | RWF901485R |
| | EKF901-625A | RWF901625R |
| | EKF901-780A | RWF901780R |

| | Watts part number | Numatics™ replacement |
|------------------|-------------------|-----------------------|
| Adsorbers | EKF702-0A-0771 | RW0A0771A |
| | EKF702-0A-0772 | RW0A0772A |
| | EKF702-0A-0773 | RW0A0773A |
| | EKF702-0A-0774 | RW0A0774A |
| | EKF702-0A-0775 | RW0A0775A |
| | EKF702-0A-0776 | RW0A0776A |
| | EKF702-0A-0777 | RW0A0777A |
| | EKF702-0A-0778 | RW0A0778A |
| | EKF702-0A-0779 | RW0A0779A |
| | EKF901-35H | RWF90135A |
| | EKF901-60H | RWF90160A |
| | EKF901-100H | RWF901100A |
| | EKF901-170H | RWF901170A |
| | EKF901-250H | RWF901250A |
| | EKF901-375H | RWF901375A |
| | EKF901-485H | RWF901485A |
| | EKF901-625H | RWF901625A |
| | EKF901-780H | RWF901780A |

| | Watts part number | Numatics™ replacement |
|--------------|-------------------|-----------------------|
| Other | EK100G | RW100G |
| | EK100J | RW100J |
| | EK504VY | RW504VY |
| | EK504Y | RW504Y |
| | EK55G | RW55G |
| | EK55J | RW55J |
| | EK602A | RW602A |
| | EK602B | RW602B |

| | Watts part number | Numatics™ replacement |
|-----------------------|-------------------|-----------------------|
| Other (cont'd) | EK602G | RW602G |
| | EK602VA | RW602VA |
| | EK602VB | RW602VB |
| | EK602VY | RW602VY |
| | EK602Y | RW602Y |
| | EKF31H | RW31H |
| | F400 | PLS-BD |

Wilkerson™

| | Wilkerson part number | Numatics™ replacement |
|--------------------|-----------------------|-----------------------|
| Particulate | FRP-95-115 | RW95115U |
| | FRP-95-160 | RW95160U |
| | FRP-95-168 | RW95168U |
| | FRP-95-172 | RW95172U |
| | FRP-95-203 | RW95203U |
| | FRP-95-206 | RW95206U |
| | FRP-95-209 | RW95209U |
| | FRP-95-210 | RW95210U |
| | FRP-95-212 | RW95212U |
| | FRP-95-213 | RW95213U |
| | FRP-95-235 | RW95235U |
| | FRP-95-236 | RW95236U |
| | FRP-95-267 | RW95267U |
| | FRP-95-505 | RW95505U |
| | FRP-95-507 | RW95507U |
| | FRP-95-508 | RW95508U |
| | FRP-95-566 | RW95566U |
| | FRP-95-567 | RW95567U |
| | FRP-96-639 | RW96639U |

| | Watts part number | Numatics™ replacement |
|----------------------------|-------------------|-----------------------|
| Coalescers (Type B) | MSP-95-500 | RW95500T |
| | MSP-95-556 | RW95556T |
| | MSP-95-557 | RW95557T |
| | MSP-95-873 | RW95873T |
| | MSP-95-874 | RW95874T |
| | MSP-95-875 | RW95875T |
| | MSP-95-876 | RW95876T |
| | MTP-95-991 | RW95991T |
| | MSP-95-988 | RW95988T |
| | MSP-95-989 | RW95989T |
| | MSP-95-992 | RW95992T |
| | MSP-95-993 | RW95993T |
| | MTP-95-991 | RW95991T |
| | MSP-96-647 | RW96647T |
| | MSP-96-649 | RW96649T |

| | Watts part number | Numatics™ replacement |
|----------------------------|-------------------|-----------------------|
| Coalescers (Type C) | MTP-95-500 | RW95500S |
| | MTP-95-502 | RW95502S |
| | MTP-95-521 | RW95521S |
| | MTP-95-546 | RW95546S |
| | MTP-95-547 | RW95547S |
| | MTP-95-548 | RW95548S |
| | MTP-95-549 | RW95549S |



Replacement Filter Elements

| | Wilkerson part number | Numatics™ replacement |
|---|-----------------------|-----------------------|
| Coalescers (Type C) (cont'd) | MTP-95-550 | RW95550S |
| | MTP-95-551 | RW95551S |
| | MTP-95-553 | RW95553S |
| | MTP-95-554 | RW95554S |
| | MTP-95-555 | RW95555S |
| | MTP-95-559 | RW95559S |
| | MTP-95-560 | RW95560S |
| | MTP-95-561 | RW95561S |
| | MTP-95-562 | RW95562S |
| | MTP-96-646 | RW96646S |
| | MTP-96-648 | RW96648S |
| | MTP-96-732 | RW96732S |

| Adsorbers | MXP-95-500 | RW95500A |
|------------------|------------|----------|
| | MXP-95-522 | RW95522A |
| | MXP-95-532 | RW95532A |
| | MXP-95-533 | RW95533A |
| | MXP-95-534 | RW95534A |
| | MXP-95-537 | RW95537A |
| | MXP-95-538 | RW95538A |
| | MXP-95-558 | RW95558A |
| | MXP-95-540 | RW95540A |
| | MXP-95-564 | RW95564A |
| | MXP-95-565 | RW95565A |
| | MXP-95-987 | RW95987A |
| | MXP-96-650 | RW96650A |

Xebec™

| | Xebec part number | Numatics™ replacement |
|--------------------|-------------------|-----------------------|
| Particulate | AE0075-3 | RXAE00753 |
| | FE936-M3 | RXFE936M3 |
| | FE428-3 | RXFE4283P |
| | PE00753 | RXPE00753 |

| Coalescers | PC0160MF-1 | RXPC0160MF1 |
|-------------------|------------|-------------|
| | PC0240MF-1 | RXPC0240MF1 |
| | PC0240MF | RXPC0240SP |
| | PE0075D | RXPE0075D |
| | PE3075Y | RXPE3075Y |
| | PE0075Y | RXPE0075Y |
| | PE0075G | RXPE0075G |
| | PE0075X | RXPE0075X |
| | PE626D | RXPE626D |

Zander™

| | Zander part number | Numatics™ replacement |
|-------------------|--------------------|-----------------------|
| Prefilters | 1030V | RZ1030P |
| | 1050V | RZ1050P |
| | 1070V | RZ1070P |
| | 2010V | RZ2010P |
| | 2020V | RZ2020P |
| | 2030V | RZ2030P |
| | 2050V | RZ2050P |

| | Zander part number | Numatics™ replacement |
|--------------------------------|--------------------|-----------------------|
| Prefilters (cont'd) | 3050V | RZ3050P |
| | 3075V | RZ3075P |
| | 5075V | RZ5075P |

| Coalescers | 1030X | RZ1030R |
|-------------------|-------|---------|
| | 1030Y | RZ1030S |
| | 1030Z | RZ1030U |
| | 1050X | RZ1050R |
| | 1050Y | RZ1050S |
| | 1050Z | RZ1050U |
| | 1070X | RZ1070R |
| | 1070Y | RZ1070S |
| | 1070Z | RZ1070U |
| | 1140X | RZ1140R |
| | 1140Y | RZ1140S |
| | 1140Z | RZ1140U |
| | 2010X | RZ2010R |
| | 2010Y | RZ2010S |
| | 2010Z | RZ2010U |
| | 2020X | RZ2020R |
| | 2020Y | RZ2020S |
| | 2020Z | RZ2020U |
| | 2030X | RZ2030R |
| | 2030Y | RZ2030S |
| | 2030Z | RZ2030U |
| | 2050X | RZ2050R |
| | 2050Y | RZ2050S |
| | 2050Z | RZ2050U |
| | 3050X | RZ3050R |
| | 3050Y | RZ3050S |
| | 3050Z | RZ3050U |
| | 3075X | RZ3075R |
| | 3075Y | RZ3075S |
| | 3075Z | RZ3075U |
| | 5075X | RZ5075R |
| | 5075Y | RZ5075S |
| | 5075Z | RZ5075U |

| Stainless Steel Retainers | 3075SS | RZ3075USS |
|----------------------------------|--------|-----------|

| Adsorbers | 1030A | RZ1030A |
|------------------|-------|---------|
| | 1050A | RZ1050A |
| | 1070A | RZ1070A |
| | 1140A | RZ1140A |
| | 2010A | RZ2010A |
| | 2020A | RZ2020A |
| | 2030A | RZ2030A |
| | 2050A | RZ2050A |
| | 3050A | RZ3050A |
| | 3075A | RZ3075A |
| | 5075A | RZ5075A |

Para Información de contacto de su oficina mas cercana visite www.mro.com.mx



Zeks™

| | Zeks part number | Numatics™ replacement |
|--------------------|------------------|-----------------------|
| Particulate | P275 | RZP275 |
| | P330 | RZP330 |
| | P670 | RZP670 |
| | E1000P | RZP1000 |

| | | |
|----------------------------|------|--------|
| Hi-Temp Particulate | H600 | RZH600 |
|----------------------------|------|--------|

| | | |
|-------------------|--------|----------|
| Coalescers | FF0250 | RZFF0250 |
| | L140 | RZL140 |
| | L400 | RZL400 |
| | R600 | RZR600 |
| | E1000G | RZG1000 |
| | E1000H | RZH1000 |

| | | |
|-----------------|--------|---------|
| Adsorber | E1000A | RZA1000 |
|-----------------|--------|---------|

Zurn™

| | Zurn part number | Numatics™ replacement |
|------------------|------------------|-----------------------|
| Prefilter | 74635-22 | RZ3522U |
| | 74635-24 | RZ3524U |
| | 74635-26 | RZ3526U |
| | 74635-32 | RZ3532U |
| | 74635-40 | RZ3540U* |
| | 74635-75 | RZ3575U |
| | 74635-90 | RZ3590U* |
| | 74635-138 | RZ35138P |
| | 74635-136 | RZ35136U |
| | 74635-136 | RZ35136U |

An asterisk (*) indicates that a mounting kit (pt# KZ1) is needed for first purchase

| | | |
|------------------|-----------|----------|
| Coalescer | 74635-21 | RZ3521S |
| | 74635-23 | RZ3523S |
| | 74635-25 | RZ3525S |
| | 74635-31 | RZ3531S |
| | 74635-39 | RZ3539S* |
| | 74635-74 | RZ3574S |
| | 74635-130 | RZ35130S |

An asterisk (*) indicates that a mounting kit (pt# KZ1) is needed for first purchase

| | | |
|-----------------|----------|----------|
| Adsorber | 74635-50 | RZ3550A* |
| | 74635-76 | RZ3576A |
| | 74635-77 | RZ3577A |
| | 74635-78 | RZ3578A |
| | 74635-79 | RZ3579A |
| | 74635-80 | RZ3580A |
| | | KZ-1 kit |

An asterisk (*) indicates that a mounting kit (pt# KZ1) is needed for first purchase

NUMATICS

*World Class Supplier
of Pneumatic Components*



Para Información de contacto de su oficina mas cercana visite www.mro.com.mx

Automation Industries *Automation Smart, Simple, Efficient.*